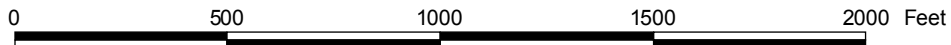
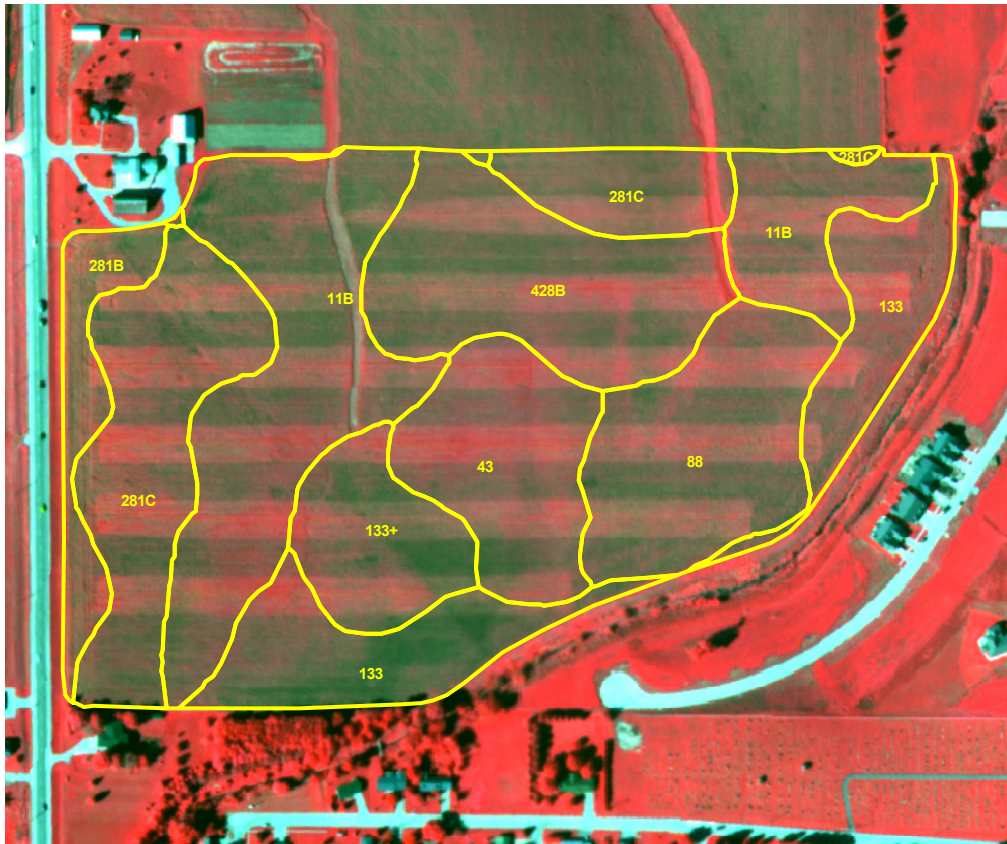


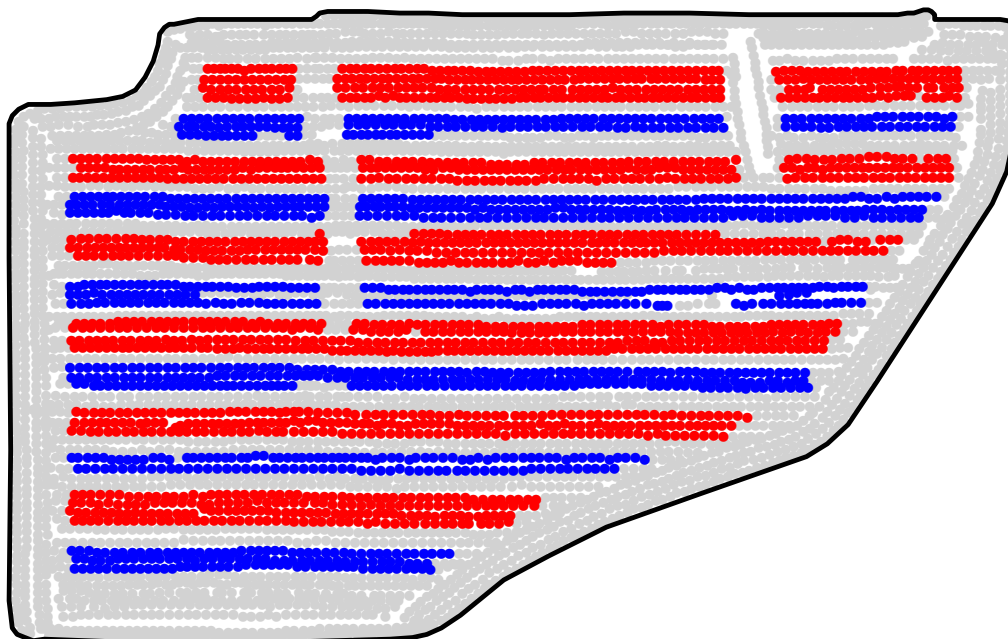
ST2008321A

# 2008 Aerial Imagery With Soil Survey



ST2008321A

# Treatment Type and Location of Trial Within Field

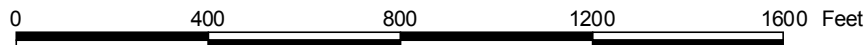


Non-Trial Yield Points (in grey)  
Are Not Used In Summary Statistics



<b>Trial Type</b>	Headline Fungicide
<b>Application Method</b>	Ground Applied
<b>Crop Rotation</b>	Soybeans Following Corn
<b>Hybrid/Variety</b>	Pioneer 92M91
<b>Application Date/Crop Stage</b>	8/6/2008 - R3 Beg. Pod
<b>County</b>	Washington

<b>FUNGICIDE TREATMENT</b>
Yield Data Points
● Headline
● Untreated
● Non-Trial



ST2008321A

# Trial Grain Yield Map With Soil Survey

