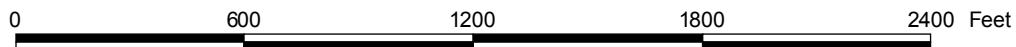
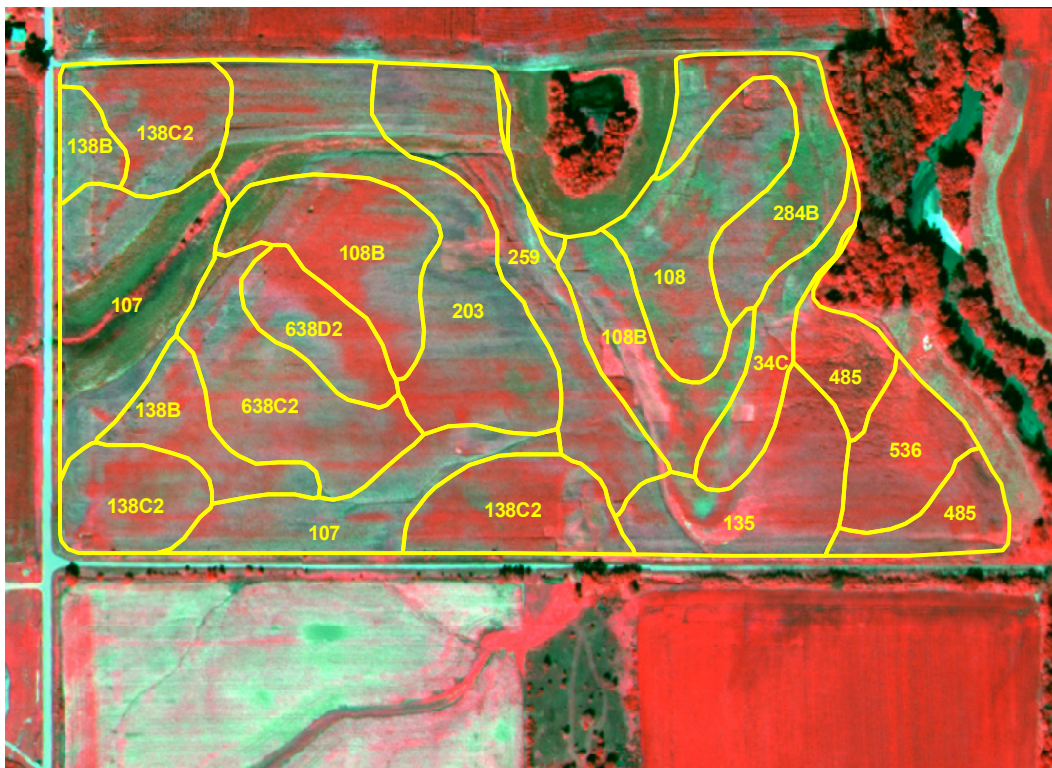


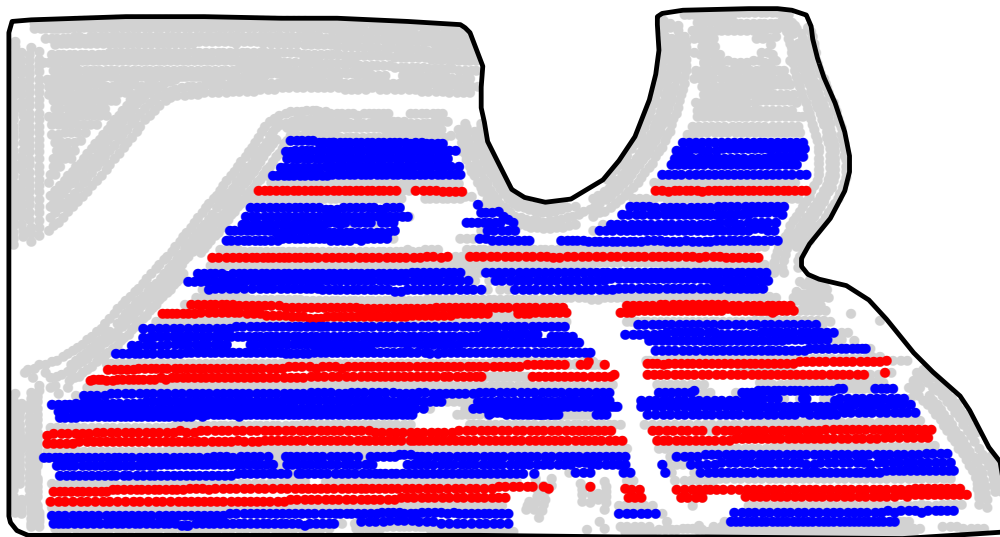
ST2008179A

2008 Aerial Imagery With Soil Survey



ST2008179A

Treatment Type and Location of Trial Within Field



Non-Trial Yield Points (in grey)
Are Not Used In Summary Statistics



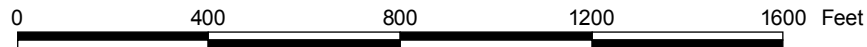
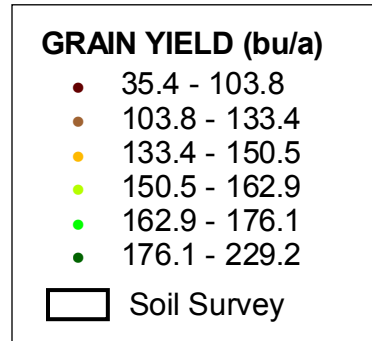
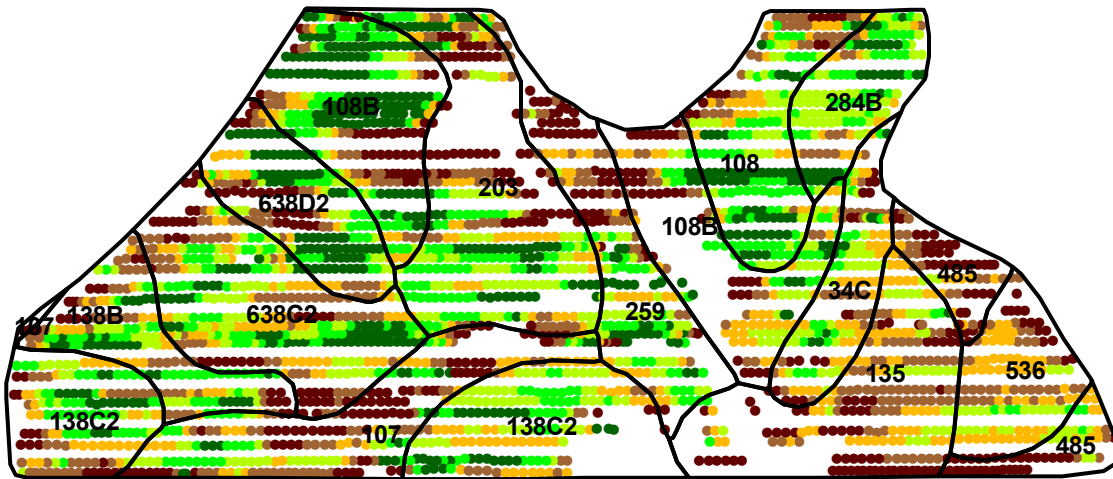
Trial Type	Headline Fungicide
Application Method	Aerial Applied
Crop Rotation	Corn Following Corn (3 Years)
Hybrid/Variety	Pioneer 33D14
Application Date/Crop Stage	8/19/2008 - R2 Blister
County	Story

FUNGICIDE TREATMENT	
Yield Data Points	
●	Headline
●	Untreated
●	Non-Trial



ST2008179A

Trial Grain Yield Map With Soil Survey



ST2008179A

Summary Statistics By Soil Type and By Individual Treatment Strip

Soil Name	Label	Percent of Trial		Yield (bu/a)		Yield Difference
		Headline	Untreated	Headline	Untreated	
Webster Clay Loam, 0 To 2 Percent Slopes	107	3.0	4.2	126.8	121.0	5.8
Wadena Loam, 24 To 32 Inches To Sand And Gravel, 0 To 2 Percent	108	1.4	5.7	166.8	154.4	12.4
Wadena Loam, 24 To 32 Inches To Sand And Gravel, 2 To 5 Percent	108B	3.3	10.5	144.8	153.0	-8.2
Coland Clay Loam, 0 To 2 Percent Slopes	135	2.6	4.2	135.0	106.3	28.7
Clarion Loam, 2 To 5 Percent Slopes	138B	1.5	3.8	144.4	142.7	1.7
Clarion Loam, 5 To 9 Percent Slopes, Moderately Eroded	138C2	3.8	6.0	148.9	152.5	-3.6
Cylinder Loam, 32 To 40 Inches To Sand And Gravel, 0 To 2 Percent	203	3.1	7.5	140.4	144.8	-4.4
Biscay Clay Loam, 32 To 40 Inches To Sand And Gravel, 0 To 2 Percent	259	1.9	4.6	143.9	133.4	10.5
Flagler Sandy Loam, 2 To 5 Percent Slopes	284B	0.8	3.7	162.2	163.0	-0.8
Estherville Sandy Loam, 2 To 9 Percent Slopes	34C	1.6	2.8	134.9	144.2	-9.3
Spillville Loam, 0 To 2 Percent Slopes	485	1.1	2.5	129.2	88.2	41.0
Hanlon Fine Sandy Loam, 0 To 2 Percent Slopes	536	1.6	2.4	138.9	124.5	14.4
Clarion-Storden Loams, 5 To 9 Percent Slopes, Moderately Eroded	638C2	3.1	7.3	137.2	149.7	-12.5
Clarion-Storden Loams, 9 To 14 Percent Slopes, Moderately Erode	638D2	2.0	3.9	139.4	160.8	-21.4
YIELD AVERAGE FOR TRIAL				141.1	142.5	-1.4

