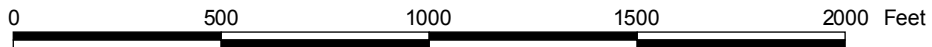
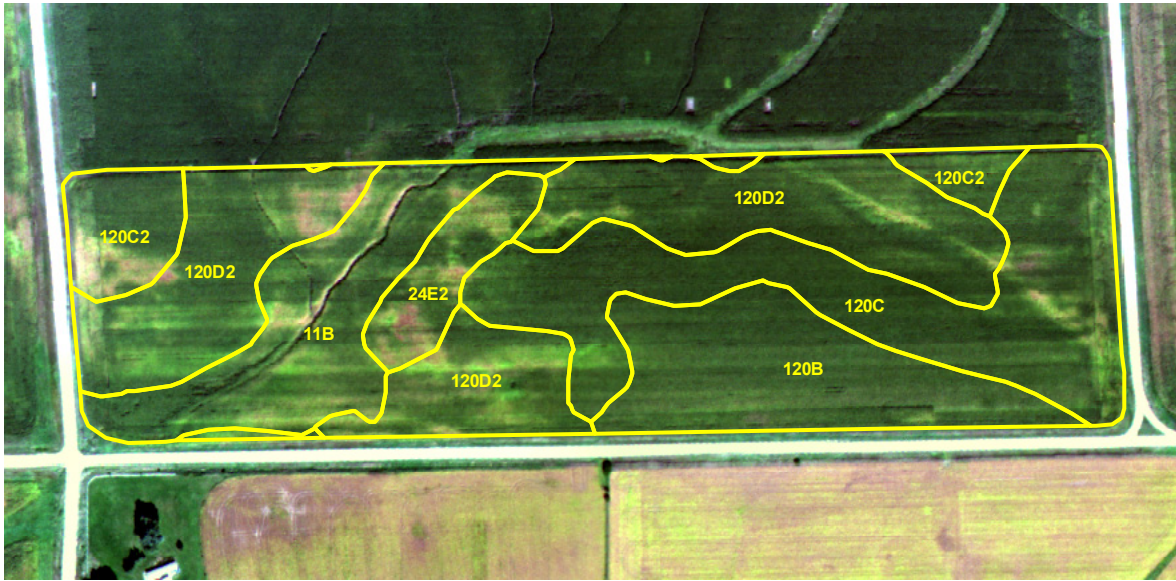


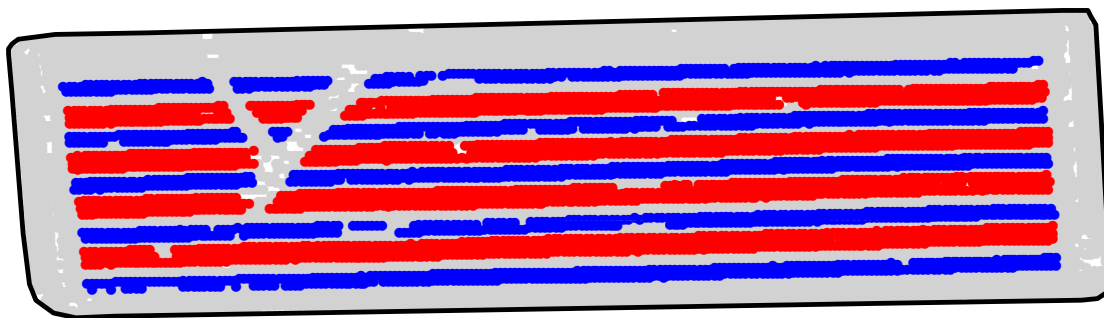
ST2008350A

2008 Aerial Imagery With Soil Survey



ST2008350A

Treatment Type and Location of Trial Within Field



Non-Trial Yield Points (in grey)
Are Not Used In Summary Statistics

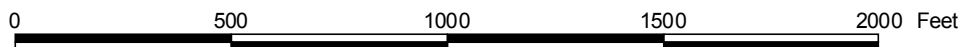


| | |
|--------------------------|----------------------------|
| Trial Type | Nitrogen - Fall vs. Spring |
| Fertilizer Form | NH ₃ |
| Fertilizer Timing | Fall and Preplant Spring |
| Treatments | 130 lbs N vs 130 lbs N |
| Previous Crop | Soybeans |
| County | Marshall |

NITROGEN TREATMENT

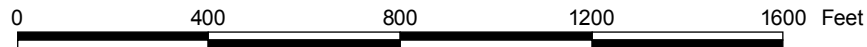
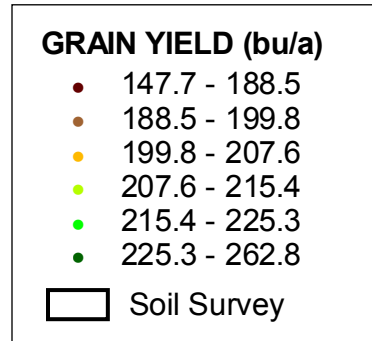
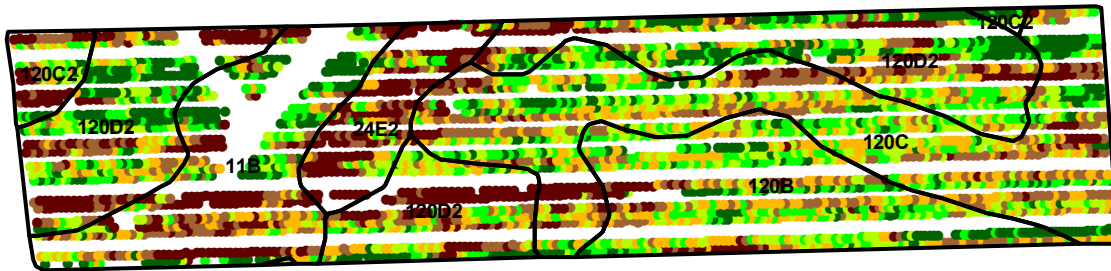
Yield Data Points

- 130 lbs N Spring NH₃
- 130 lbs N Fall NH₃
- Non-Trial



ST2008350A

Trial Grain Yield Map With Soil Survey



ST2008350A

Summary Statistics By Soil Type and By Individual Treatment Strip

| Soil Name | Label | Percent of Trial | | Yield (bu/a) | | Yield Difference |
|--------------------------------|-------|----------------------|--------------------|----------------------|--------------------|------------------|
| | | 130 lbs N Spring NH3 | 130 lbs N Fall NH3 | 130 lbs N Spring NH3 | 130 lbs N Fall NH3 | |
| Colo-Ely Complex | 11B | 7.2 | 5.9 | 211.9 | 198.2 | 13.7 |
| Tama | 120B | 7.7 | 8.0 | 211.9 | 211.4 | 0.5 |
| Tama | 120C | 17.7 | 12.1 | 209.7 | 206.2 | 3.5 |
| Tama | 120C2 | 1.1 | 1.5 | 211.2 | 197.8 | 13.4 |
| Tama | 120D2 | 18.3 | 14.5 | 215.0 | 199.3 | 15.7 |
| Shelby | 24E2 | 3.8 | 2.2 | 191.2 | 179.5 | 11.7 |
| YIELD AVERAGE FOR TRIAL | | | | 210.8 | 202.2 | 8.6 |

