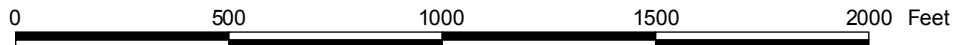
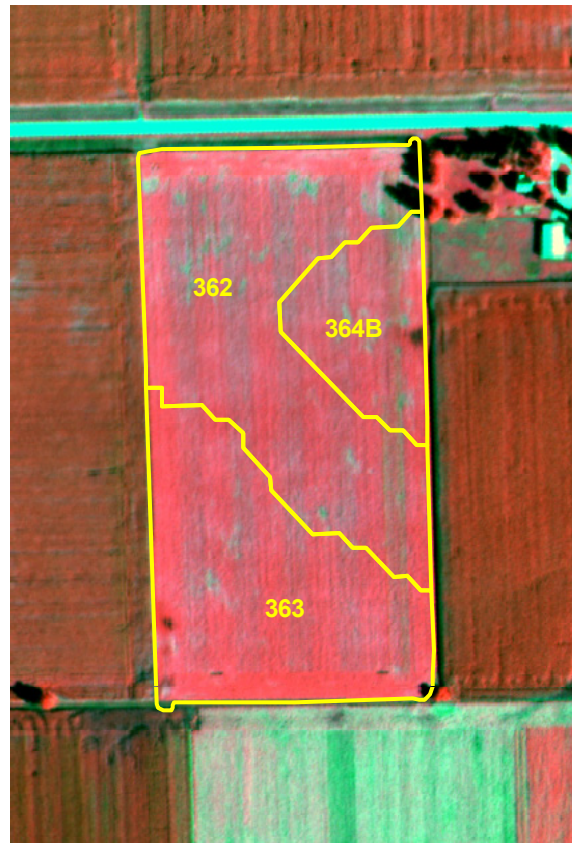


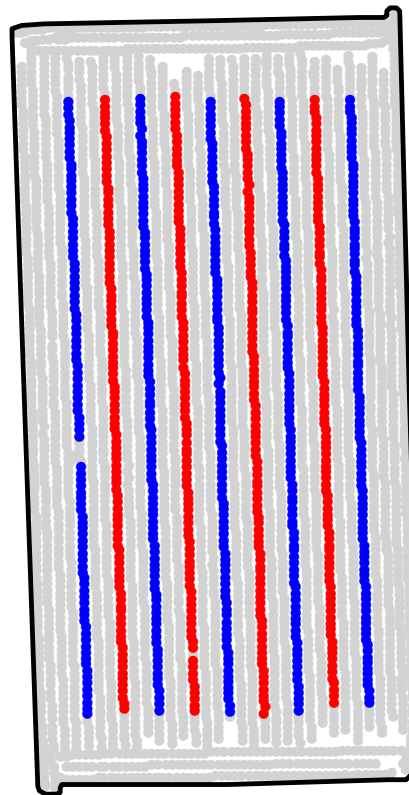
ST2008217A

2008 Aerial Imagery With Soil Survey



ST2008217A

Treatment Type and Location of Trial Within Field



Non-Trial Yield Points (in grey)
Are Not Used In Summary Statistics

Trial Type	Headline/Permethrin
Application Method	Ground Applied
Crop Rotation	Soybeans Following Corn
Hybrid/Variety	?
Application Date/Crop Stage	7/29/2008 & 8/1/2008 - R3 Beg. Pod
County	Lee

FUNGICIDE AND INSECTICIDE TREATMENT

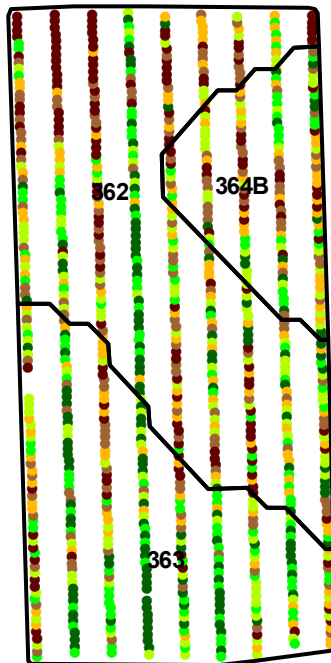
Yield Data Points

- Headline & Permethrin
- Untreated
- Non-Trial



ST2008217A

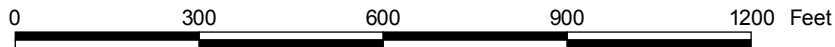
Trial Grain Yield Map With Soil Survey



GRAIN YIELD (bu/a)

- 47.7 - 60.0
- 60.0 - 62.2
- 62.2 - 64.2
- 64.2 - 66.5
- 66.5 - 69.5
- 69.5 - 78.8

□ Soil Survey



ST2008217A

Summary Statistics By Soil Type and By Individual Treatment Strip

Soil Name	Label	Percent of Trial		Yield (bu/a)		Yield Difference
		Headline & Permethrin	Untreated	Headline & Permethrin	Untreated	
Haig	362	21.9	26.5	65.3	62.2	3.1
Haig	363	15.5	19.3	69.0	64.0	5.0
Grundy	364B	6.9	10.0	64.1	63.6	0.5
YIELD AVERAGE FOR TRIAL				66.4	63.1	3.3

