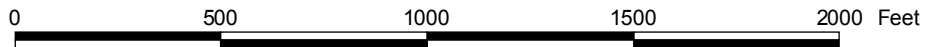
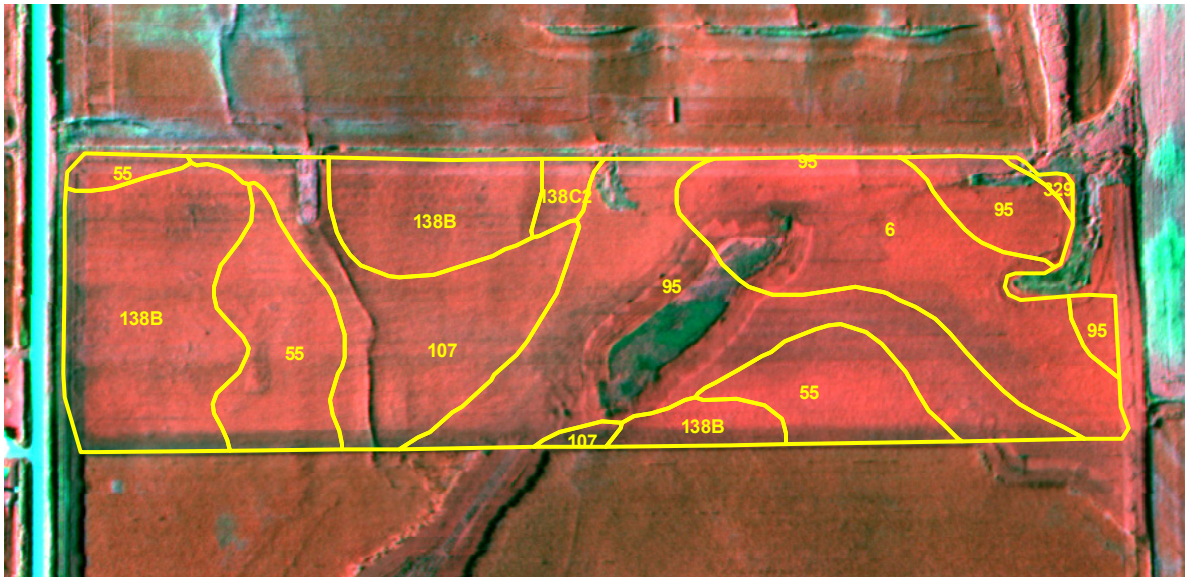


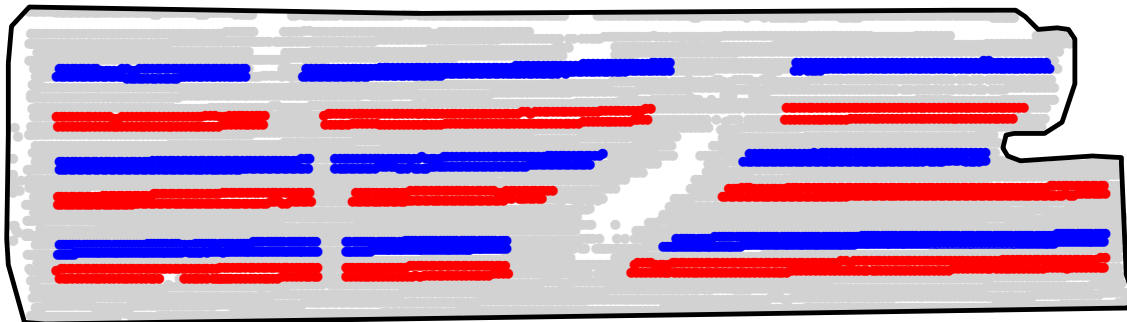
ST2008117A

# 2008 Aerial Imagery With Soil Survey



ST2008117A

## Treatment Type and Location of Trial Within Field

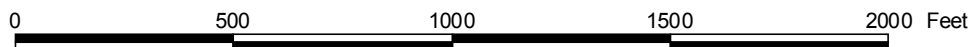


Non-Trial Yield Points (in grey)  
Are Not Used In Summary Statistics



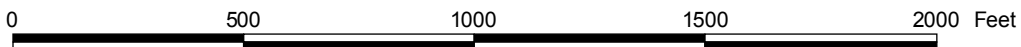
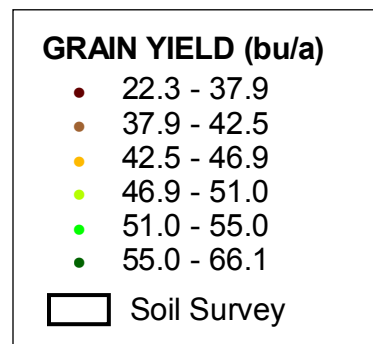
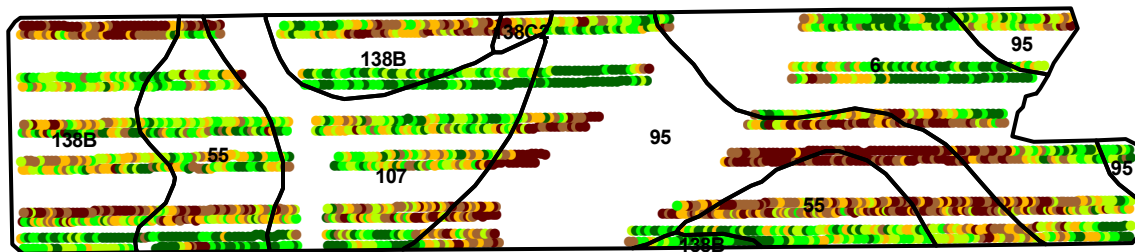
<b>Trial Type</b>	Headline Fungicide
<b>Application Method</b>	Aerial Applied
<b>Crop Rotation</b>	Soybeans Following Corn
<b>Hybrid/Variety</b>	Dekalb DKB25-52
<b>Application Date/Crop Stage</b>	8/18/2008 - Not Provided
<b>County</b>	Hardin

<b>FUNGICIDE TREATMENT</b>	
Yield Data Points	
●	Headline
●	Untreated
●	Non-Trial



ST2008117A

# Trial Grain Yield Map With Soil Survey



ST2008117A

## Summary Statistics By Soil Type and By Individual Treatment Strip

Soil Name	Label	Percent of Trial		Yield (bu/a)		Yield Difference
		Headline	Untreated	Headline	Untreated	
Webster Silty Clay Loam, 0 To 2 Percent Slopes	107	7.2	8.0	51.3	46.9	4.4
Clarion Loam, 2 To 5 Percent Slopes	138B	10.2	12.2	51.5	43.0	8.5
Clarion Loam, 5 To 9 Percent Slopes, Moderately Eroded	138C2	0.0	0.9	0.0	42.3	0.0
Nicollet Loam, 1 To 3 Percent Slopes	55	10.6	10.9	50.2	43.7	6.5
Okoboji Silty Clay Loam, 0 To 1 Percent Slopes	6	8.4	8.6	49.5	47.0	2.5
Harps Loam, 1 To 3 Percent Slopes	95	11.1	12.0	43.5	42.7	0.8
<b>YIELD AVERAGE FOR TRIAL</b>				<b>49.0</b>	<b>44.3</b>	<b>4.7</b>

