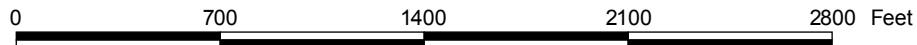
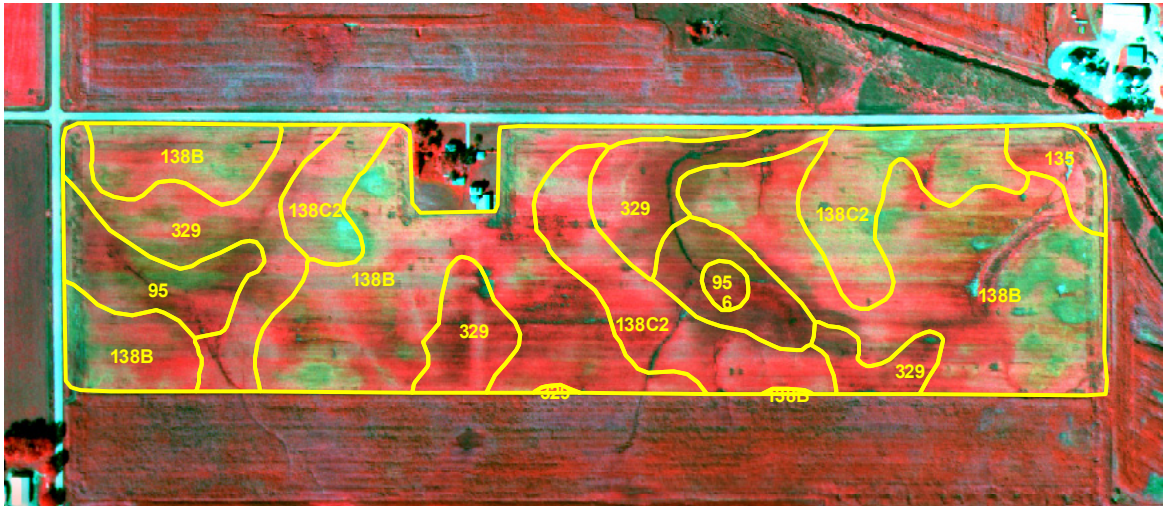


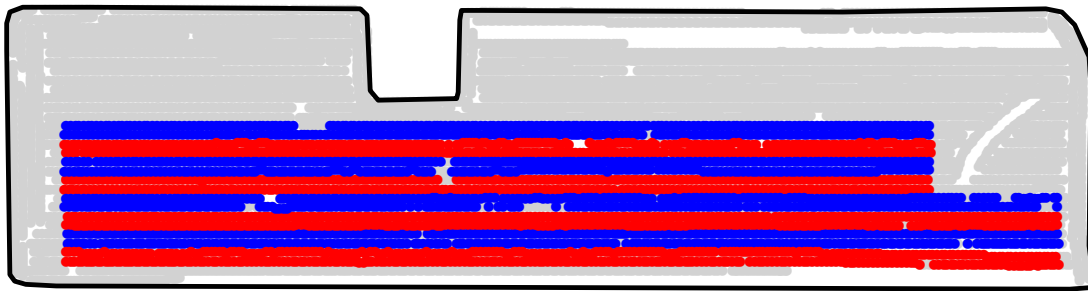
ST2008068A

# 2008 Aerial Imagery With Soil Survey



ST2008068A

# Treatment Type and Location of Trial Within Field

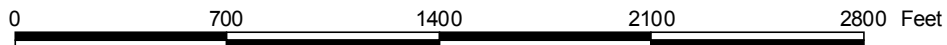


Non-Trial Yield Points (in grey)  
Are Not Used In Summary Statistics



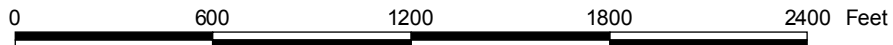
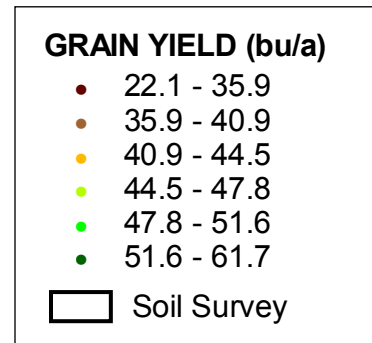
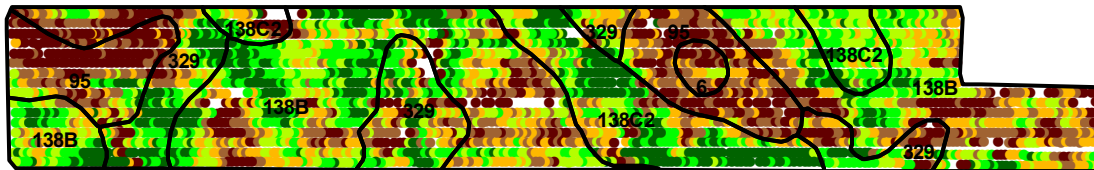
<b>Trial Type</b>	Headline Fungicide
<b>Application Method</b>	Ground Applied
<b>Crop Rotation</b>	Soybeans Following Corn
<b>Hybrid/Variety</b>	Champion Seed 2590N (Food Grade)
<b>Application Date/Crop Stage</b>	8/1/2008 - R3 Beg. Pod
<b>County</b>	Hardin

<b>FUNGICIDE TREATMENT</b>	
Yield Data Points	
●	Headline
●	Untreated
●	Non-Trial



ST2008068A

# Trial Grain Yield Map With Soil Survey



ST2008068A

## Summary Statistics By Soil Type and By Individual Treatment Strip

Soil Name	Label	Percent of Trial		Yield (bu/a)		Yield Difference
		Headline	Untreated	Headline	Untreated	
Clarion Loam, 2 To 5 Percent Slopes	138B	26.0	24.5	45.7	43.5	2.2
Clarion Loam, 5 To 9 Percent Slopes, Moderately Eroded	138C2	8.5	8.3	49.2	46.4	2.8
Webster-Nicollet Complex, 1 To 3 Percent Slopes	329	8.7	8.8	45.9	42.0	3.9
Okoboji Silty Clay Loam, 0 To 1 Percent Slopes	6	0.7	0.7	39.5	34.4	5.1
Harps Loam, 1 To 3 Percent Slopes	95	6.9	7.0	37.5	36.2	1.3
<b>YIELD AVERAGE FOR TRIAL</b>				<b>45.1</b>	<b>42.6</b>	<b>2.5</b>

