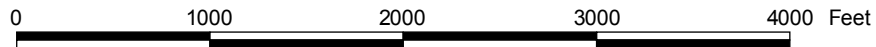
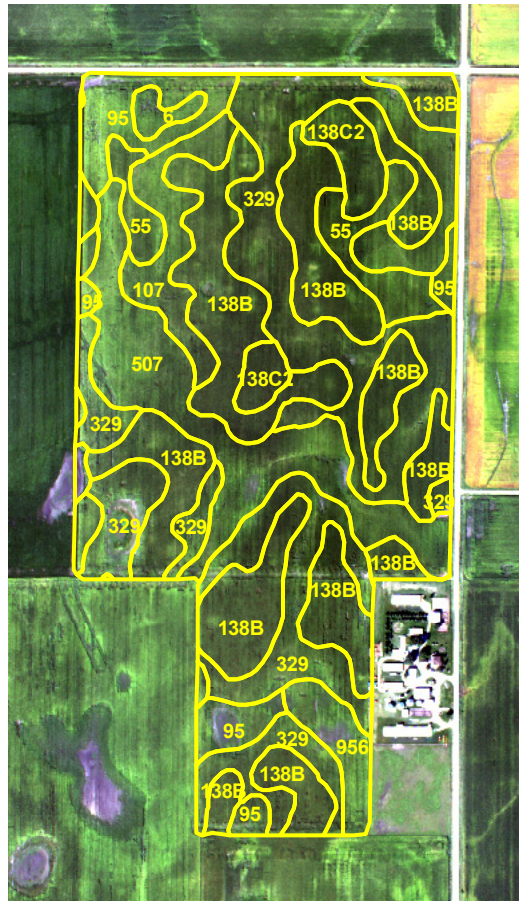


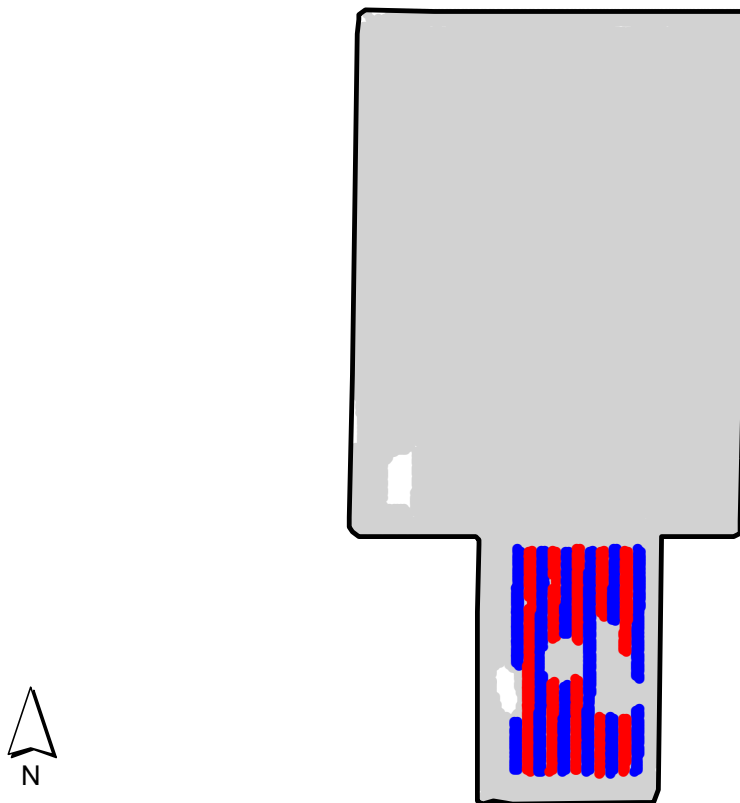
ST2008060C

2008 Aerial Imagery With Soil Survey



ST2008060C

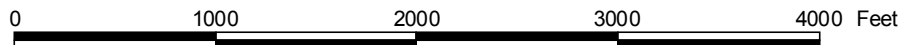
Treatment Type and Location of Trial Within Field



Non-Trial Yield Points (in grey)
Are Not Used In Summary Statistics

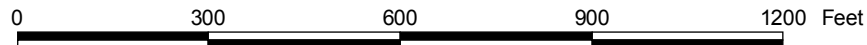
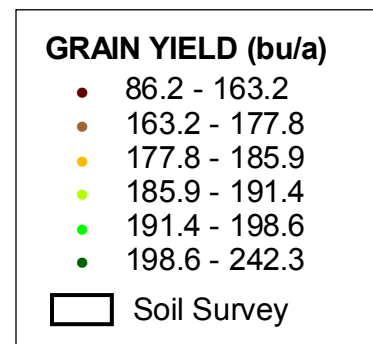
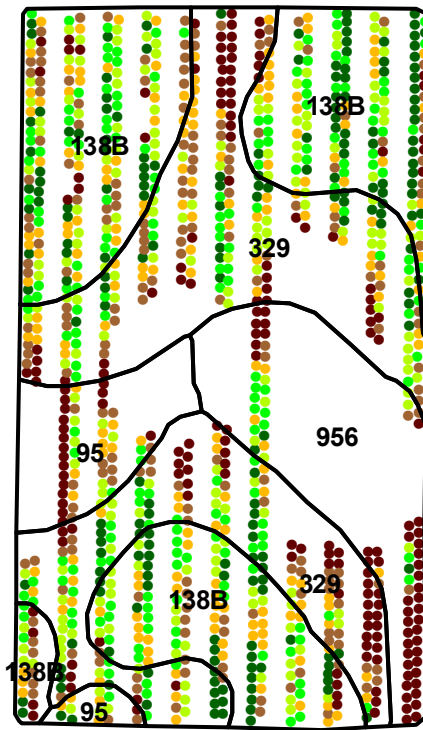
Trial Type	Plant Nutrition - GP 4350 on Corn
Application Method	Ground Applied
Crop Rotation	Corn Following Corn (2 Years)
Hybrid/Variety	Champion Seed CSX1086
Application Date/Crop Stage	8/2/2008 - VT
County	Hardin

PLANT TREATMENT	
Yield Data Points	
● GP 4350	
● Untreated	
● Non-Trial	



ST2008060C

Trial Grain Yield Map With Soil Survey



ST2008060C

Summary Statistics By Soil Type and By Individual Treatment Strip

Soil Name	Label	Percent of Trial		Yield (bu/a)		Yield Difference
		GP 4350	Untreated	GP 4350	Untreated	
Clarion Loam, 2 To 5 Percent Slopes	138B	18.9	27.8	188.5	189.1	-0.6
Webster-Nicollet Complex, 1 To 3 Percent Slopes	329	21.1	19.9	175.1	178.7	-3.6
Harps Loam, 1 To 3 Percent Slopes	95	3.4	2.4	166.4	177.1	-10.7
Okoboji-Harps Complex, 0 To 2 Percent Slopes	956	0.5	6.1	148.8	151.1	-2.3
YIELD AVERAGE FOR TRIAL				179.9	180.8	-0.9

