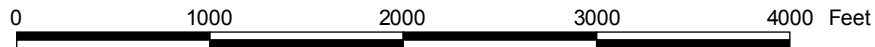
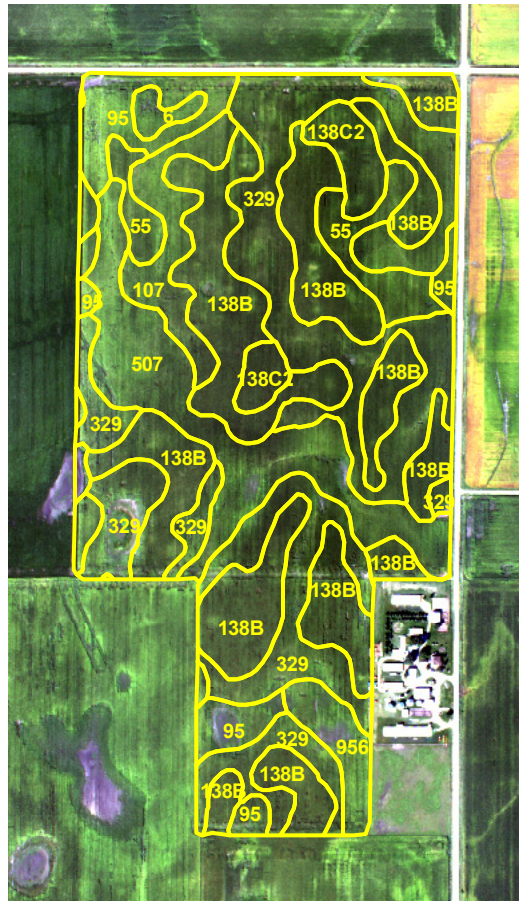


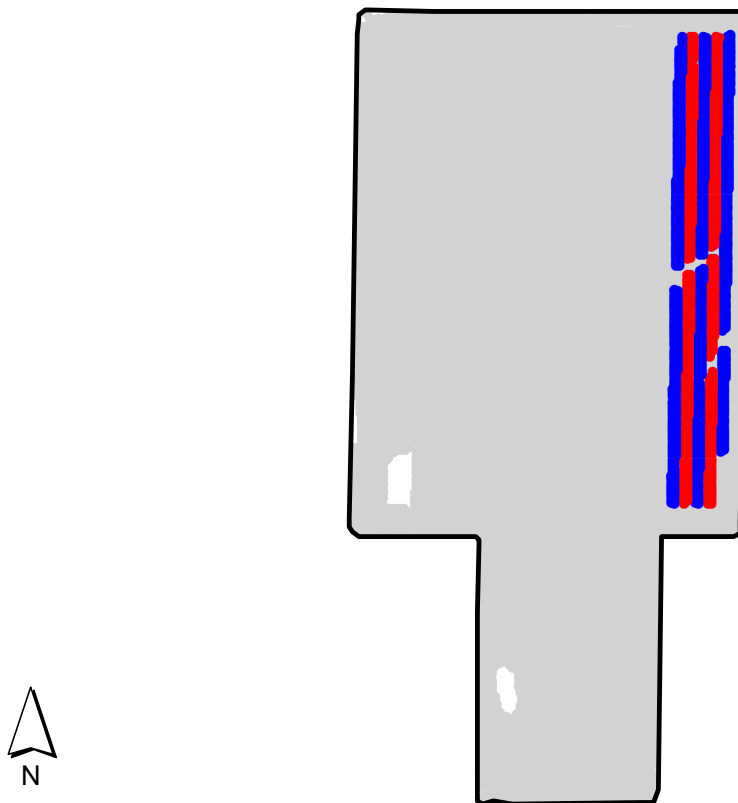
ST2008060B

2008 Aerial Imagery With Soil Survey



ST2008060B

Treatment Type and Location of Trial Within Field



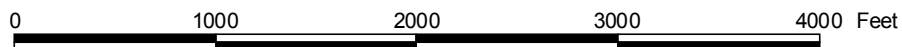
Non-Trial Yield Points (in grey)
Are Not Used In Summary Statistics

Trial Type	Plant Nutrition - Yield Igniter
Application Method	Ground Applied
Crop Rotation	Corn Following Corn (2 Years)
Hybrid/Variety	Pioneer 33M14
Application Date/Crop Stage	6/23/2008 - Vegetative
County	Hardin

PLANT TREATMENT

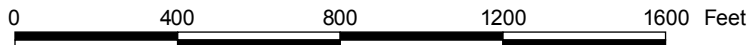
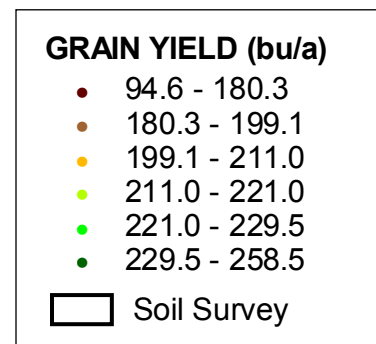
Yield Data Points

- Yield Igniter
- Untreated
- Non-Trial



ST2008060B

Trial Grain Yield Map With Soil Survey



ST2008060B

Summary Statistics By Soil Type and By Individual Treatment Strip

Soil Name	Label	Percent of Trial		Yield (bu/a)		Yield Difference
		Yield Igniter	Untreated	Yield Igniter	Untreated	
Clarion Loam, 2 To 5 Percent Slopes	138B	14.8	23.3	210.7	218.9	-8.2
Webster-Nicollet Complex, 1 To 3 Percent Slopes	329	17.0	23.3	206.4	205.2	1.2
Canisteo Silty Clay Loam, 0 To 2 Percent Slopes	507	3.0	3.6	191.6	196.6	-5.0
Nicollet Loam, 1 To 3 Percent Slopes	55	5.6	8.2	187.3	179.9	7.4
Harps Loam, 1 To 3 Percent Slopes	95	0.0	1.3	0.0	193.3	0.0
YIELD AVERAGE FOR TRIAL				204.2	206.3	-2.1

