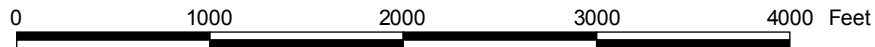
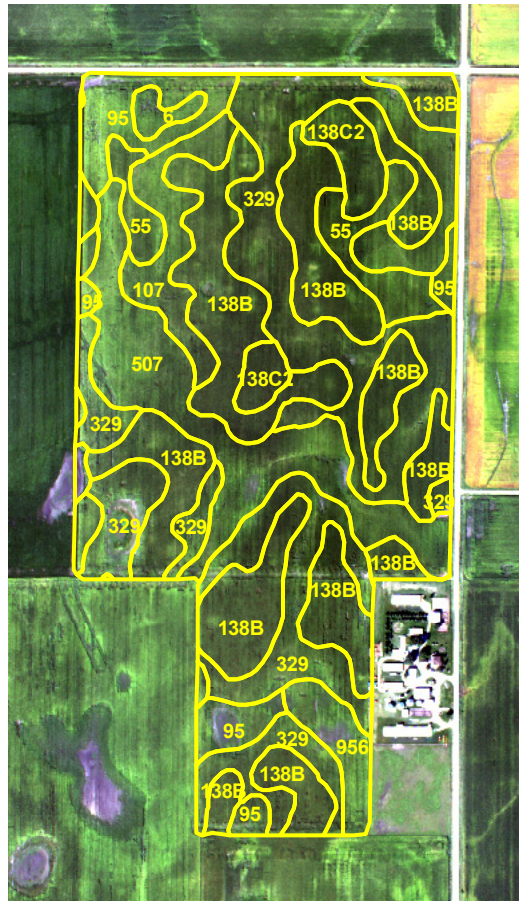


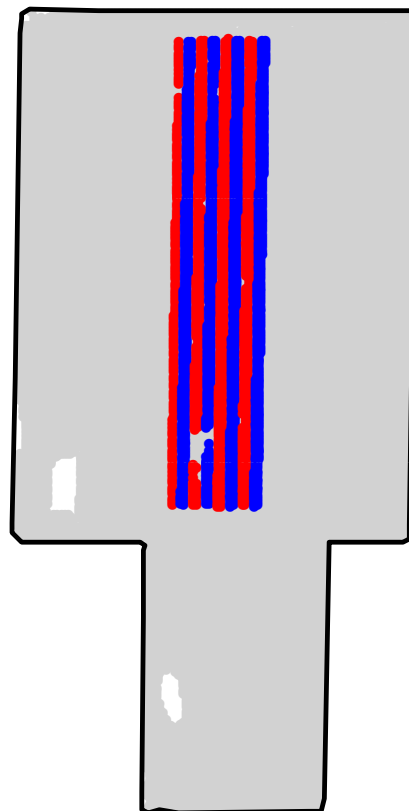
ST2008060A

2008 Aerial Imagery With Soil Survey



ST2008060A

Treatment Type and Location of Trial Within Field



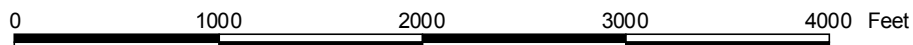
Non-Trial Yield Points (in grey)
Are Not Used In Summary Statistics

Trial Type	Plant Nutrition - Igniter 98
Application Method	Ground Applied
Crop Rotation	Corn Following Corn (2 Years)
Hybrid/Variety	Midwest Seed Genetics 78135
Application Date/Crop Stage	5/14/2008 - Planting
County	Hardin

PLANT TREATMENT

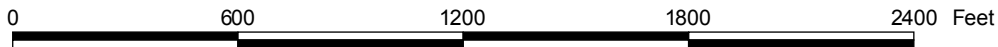
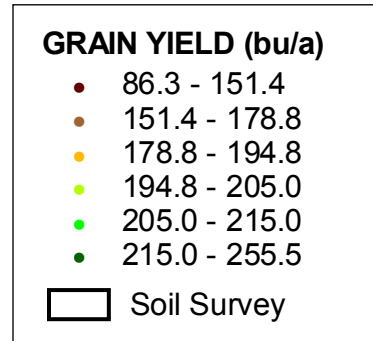
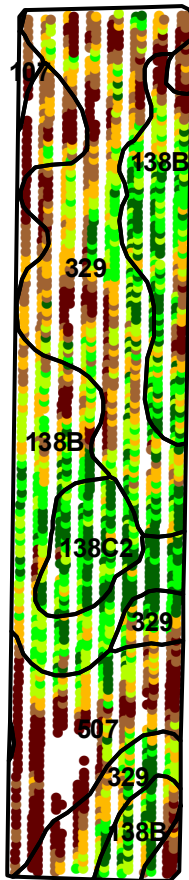
Yield Data Points

- Igniter 98
- Untreated
- Non-Trial



ST2008060A

Trial Grain Yield Map With Soil Survey



ST2008060A

Summary Statistics By Soil Type and By Individual Treatment Strip

Soil Name	Label	Percent of Trial		Yield (bu/a)		Yield Difference
		Igniter 98	Untreated	Igniter 98	Untreated	
Webster Silty Clay Loam, 0 To 2 Percent Slopes	107	0.4	0.0	150.1	0.0	0.0
Clarion Loam, 2 To 5 Percent Slopes	138B	17.1	20.2	195.7	195.9	-0.2
Clarion Loam, 5 To 9 Percent Slopes, Moderately Eroded	138C2	3.7	4.3	211.6	203.7	7.9
Webster-Nicollet Complex, 1 To 3 Percent Slopes	329	18.5	22.7	181.6	181.1	0.5
Canisteo Silty Clay Loam, 0 To 2 Percent Slopes	507	5.8	7.3	163.1	152.3	10.8
YIELD AVERAGE FOR TRIAL				186.7	184.5	2.2

