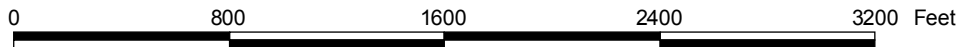
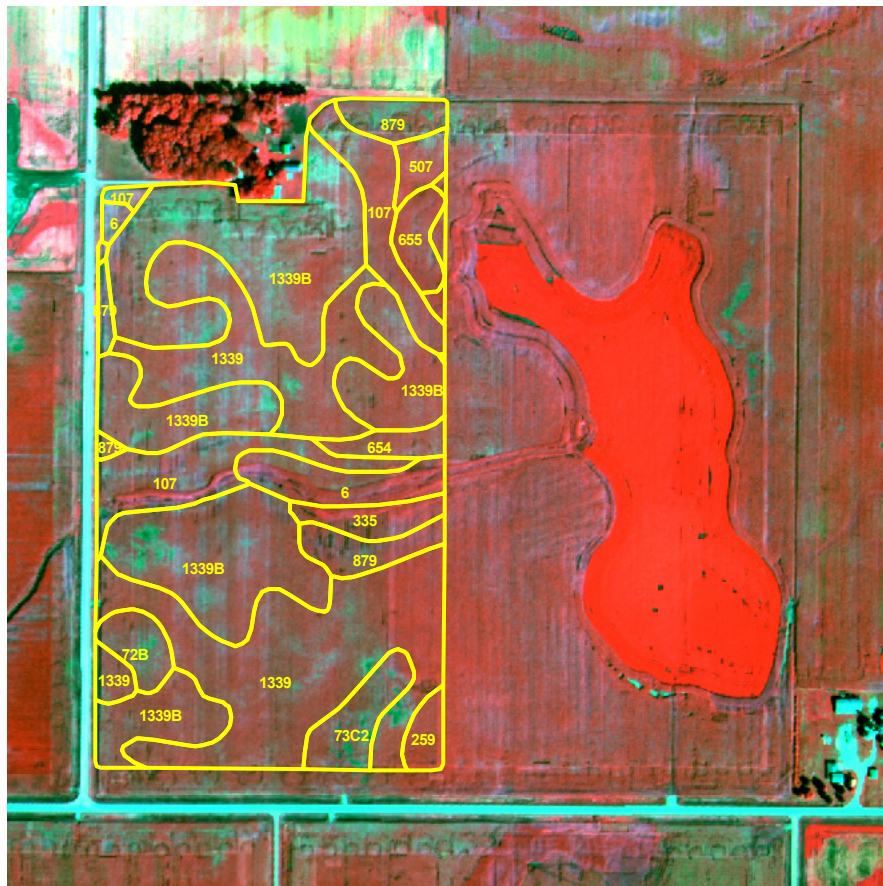


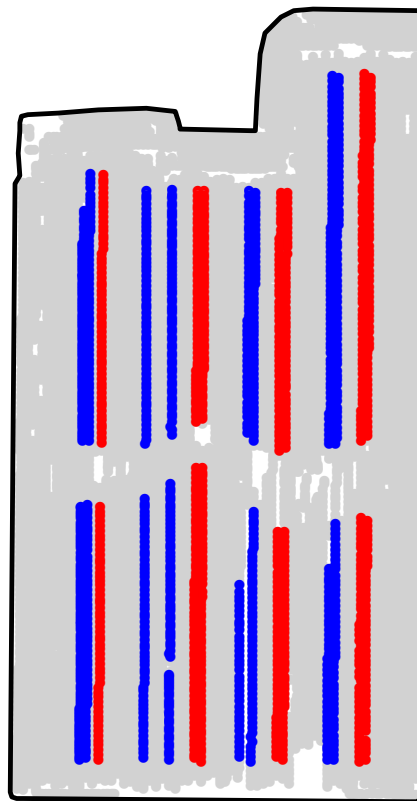
ST2008276A

2008 Aerial Imagery With Soil Survey



ST2008276A

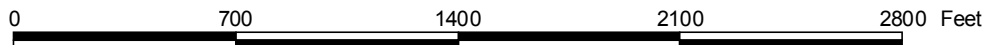
Treatment Type and Location of Trial Within Field



Non-Trial Yield Points (in grey)
Are Not Used In Summary Statistics

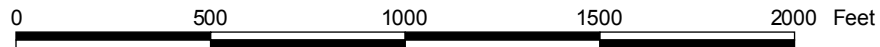
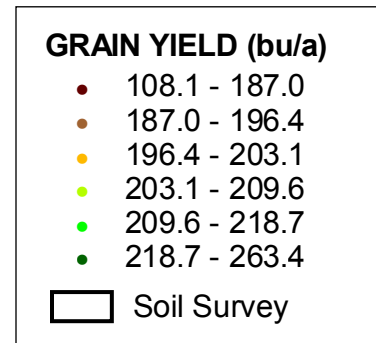
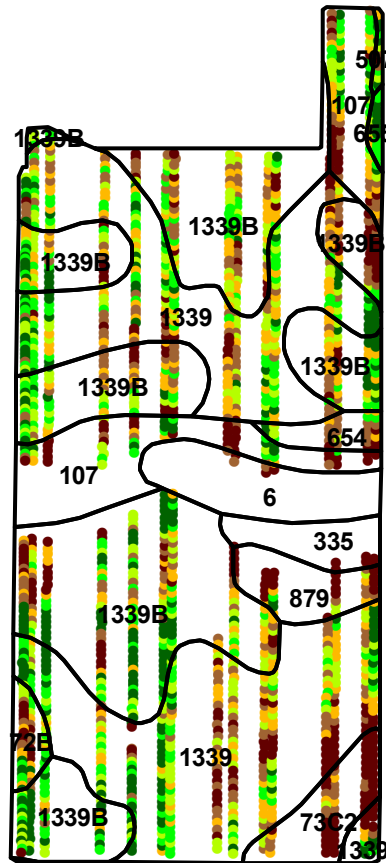
Trial Type	Headline Fungicide
Application Method	Aerial Applied
Crop Rotation	Corn Following Corn (4 Years)
Hybrid/Variety	Dekalb DKC53-06
Application Date/Crop Stage	7/31/2008 - R1 Silking
County	Hancock

FUNGICIDE TREATMENT	
Yield Data Points	
●	Headline
●	Untreated
●	Non-Trial



ST2008276A

Trial Grain Yield Map With Soil Survey



ST2008276A

Summary Statistics By Soil Type and By Individual Treatment Strip

Soil Name	Label	Percent of Trial		Yield (bu/a)		Yield Difference
		Headline	Untreated	Headline	Untreated	
Webster Clay Loam, 0 To 2 Percent Slopes	107	3.4	5.4	199.5	194.1	5.4
Truman Silty Clay Loam, Stratified Substratum, 0 To 2 Percent Slopes	1339	18.4	20.9	206.3	202.3	4.0
Truman Silty Clay Loam, Stratified Substratum, 2 To 5 Percent Slopes	1339B	17.3	22.0	204.0	205.0	-1.0
Harcot Clay Loam, 0 To 2 Percent Slopes	335	0.2	0.1	151.3	150.0	1.3
Canisteo Clay Loam, 0 To 2 Percent Slopes	507	0.8	0.0	210.3	0.0	0.0
Okoboji Silty Clay Loam, 0 To 1 Percent Slopes	6	0.2	0.2	183.7	188.0	-4.3
Corwith Loam, 1 To 3 Percent Slopes	654	1.0	0.6	199.9	193.3	6.6
Crippin Loam, 1 To 3 Percent Slopes	655	1.1	0.0	216.0	0.0	0.0
Estherville Loam, 2 To 5 Percent Slopes	72B	0.4	2.4	211.0	196.3	14.7
Salida Gravelly Sandy Loam, 2 To 9 Percent Slopes, Moderately Eroded	73C2	1.8	1.6	163.9	167.7	-3.8
Fostoria Loam, 1 To 3 Percent Slopes	879	1.4	0.9	183.1	172.6	10.5
YIELD AVERAGE FOR TRIAL				202.3	200.6	1.7

