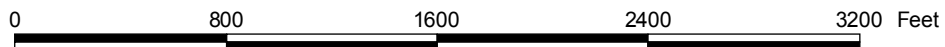
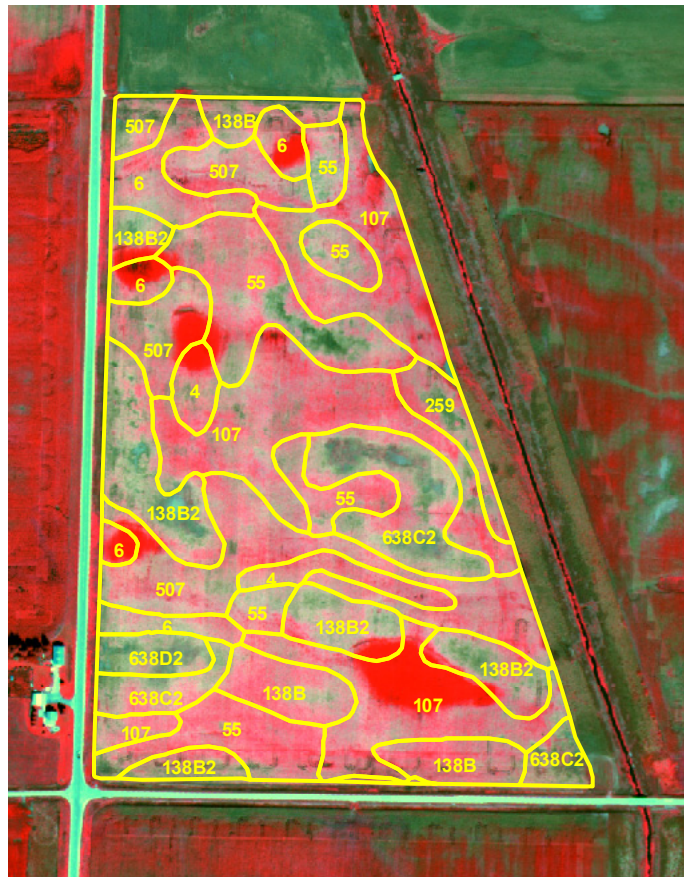


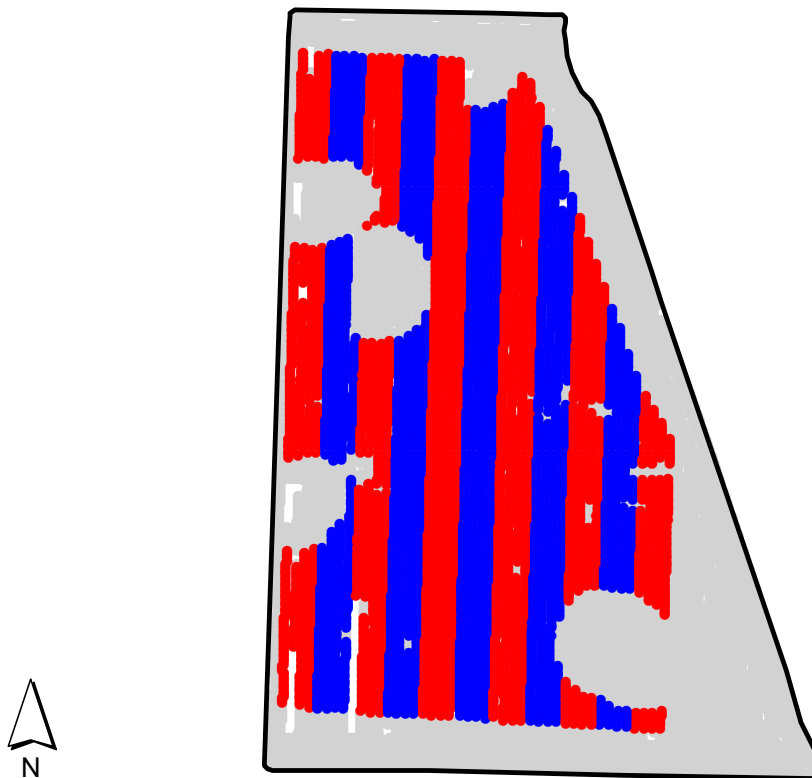
ST2008128A

2008 Aerial Imagery With Soil Survey



ST2008128A

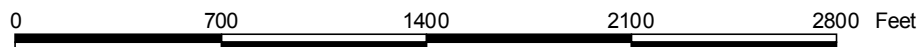
Treatment Type and Location of Trial Within Field



Non-Trial Yield Points (in grey)
Are Not Used In Summary Statistics

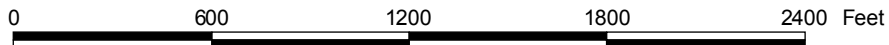
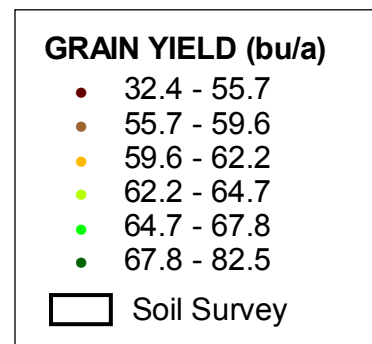
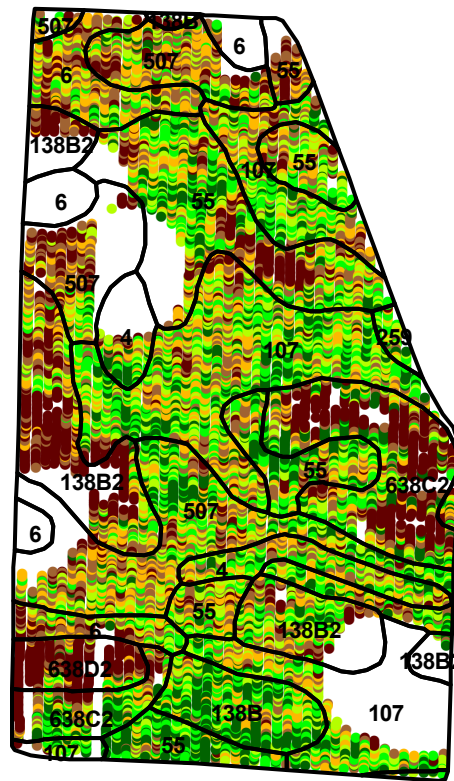
Trial Type	Domark Fungicide
Application Method	Ground Applied
Crop Rotation	Soybeans Following Corn
Hybrid/Variety	Dekalb DKB27-52
Application Date/Crop Stage	8/7/2008 - Not Provided
County	Greene

FUNGICIDE TREATMENT	
Yield Data Points	
●	Domark
●	Untreated
●	Non-Trial



ST2008128A

Trial Grain Yield Map With Soil Survey



ST2008128A

Summary Statistics By Soil Type and By Individual Treatment Strip

Soil Name	Label	Percent of Trial		Yield (bu/a)		Yield Difference
		Domark	Untreated	Domark	Untreated	
Webster Clay Loam, 0 To 2 Percent Slopes	107	11.3	12.1	63.6	63.3	0.3
Clarion Loam, 2 To 5 Percent Slopes	138B	2.5	2.3	66.8	66.1	0.7
Clarion Loam, 2 To 5 Percent Slopes, Moderately Eroded	138B2	6.5	3.2	55.9	60.3	-4.4
Biscay Loam, 32 To 40 Inches To Sand And Gravel, 0 To 2 Percent	259	0.1	0.4	66.9	64.4	2.5
Knoke Silty Clay Loam, 0 To 1 Percent Slopes	4	2.5	1.5	63.5	63.0	0.5
Canisteo Clay Loam, 0 To 2 Percent Slopes	507	8.8	9.4	61.8	61.4	0.4
Nicollet Loam, 1 To 3 Percent Slopes	55	10.7	8.8	62.8	62.8	0.0
Okoboji Silty Clay Loam, 0 To 1 Percent Slopes	6	3.2	2.8	59.5	60.9	-1.4
Clarion-Storden Loams, 5 To 9 Percent Slopes, Moderately Eroded	638C2	5.7	5.5	59.9	57.3	2.6
Clarion-Storden Loams, 9 To 14 Percent Slopes, Moderately Erode	638D2	1.5	1.0	49.9	52.9	-3.0
YIELD AVERAGE FOR TRIAL				61.3	61.7	-0.4

