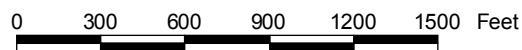
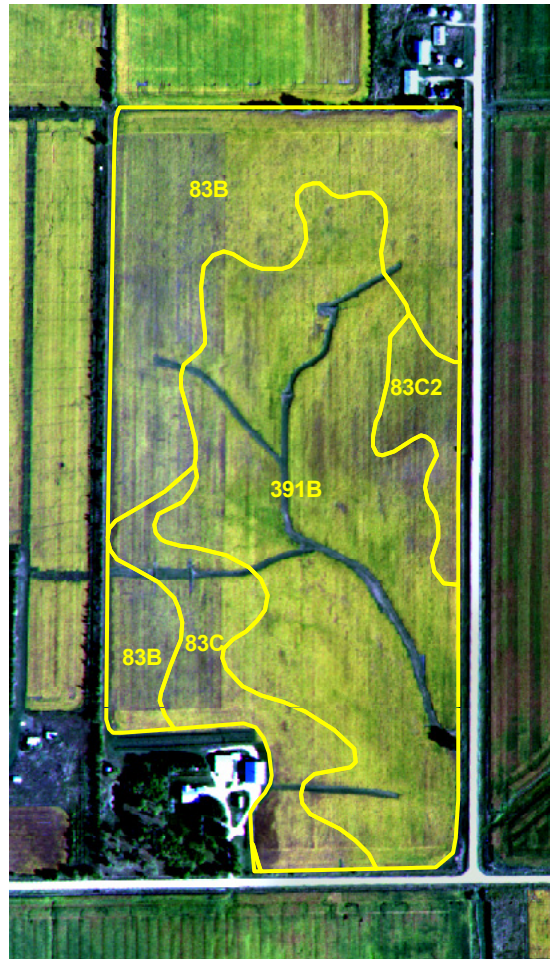


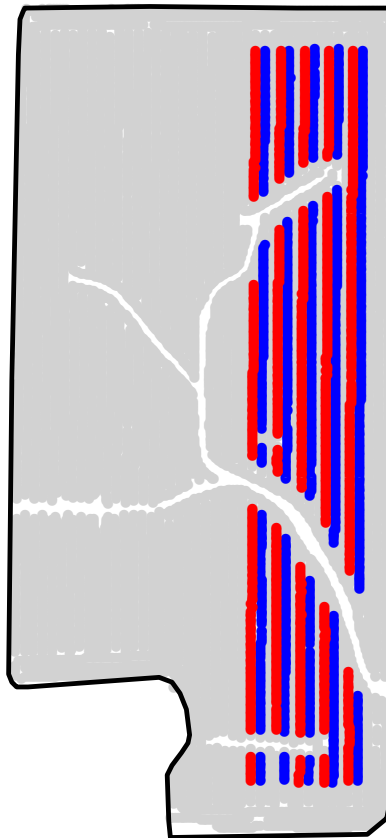
ST2008283A

2008 Aerial Imagery With Soil Survey



ST2008283A

Treatment Type and Location of Trial Within Field



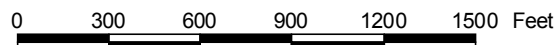
Non-Trial Yield Points (in grey)
Are Not Used In Summary Statistics

Trial Type	Seed Treatment - Cruiser Max
Application Method	Planter
Crop Rotation	Soybeans Following Corn
Hybrid/Variety	Pioneer 92M40
Application Date/Crop Stage	5/19/2008 - Planting
County	Chickasaw

SEED TREATMENT

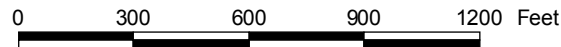
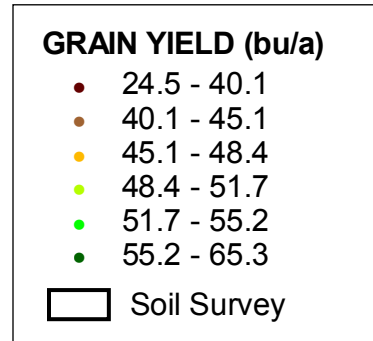
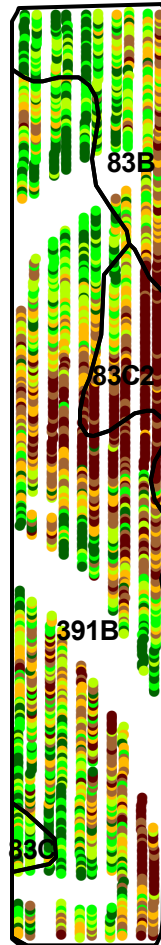
Yield Data Points

- CruiserMaxx®
- Untreated
- Non-Trial



ST2008283A

Trial Grain Yield Map With Soil Survey



ST2008283A

Summary Statistics By Soil Type and By Individual Treatment Strip

Soil Name	Label	Percent of Trial		Yield (bu/a)		Yield Difference
		CruiserMaxx	Untreated	CruiserMaxx	Untreated	
Clyde-Floyd Complex, 1 To 4 Percent Slopes	391B	35.5	34.8	48.3	47.8	0.5
Kenyon Loam, 2 To 5 Percent Slopes	83B	8.1	9.5	52.1	48.8	3.3
Kenyon Loam, 5 To 9 Percent Slopes	83C	1.2	0.7	53.1	53.4	-0.3
Kenyon Loam, 5 To 9 Percent Slopes, Moderately Eroded	83C2	4.6	5.5	41.5	39.9	1.6
YIELD AVERAGE FOR TRIAL				48.4	47.2	1.2

