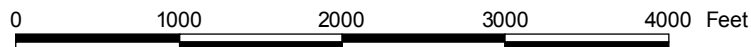


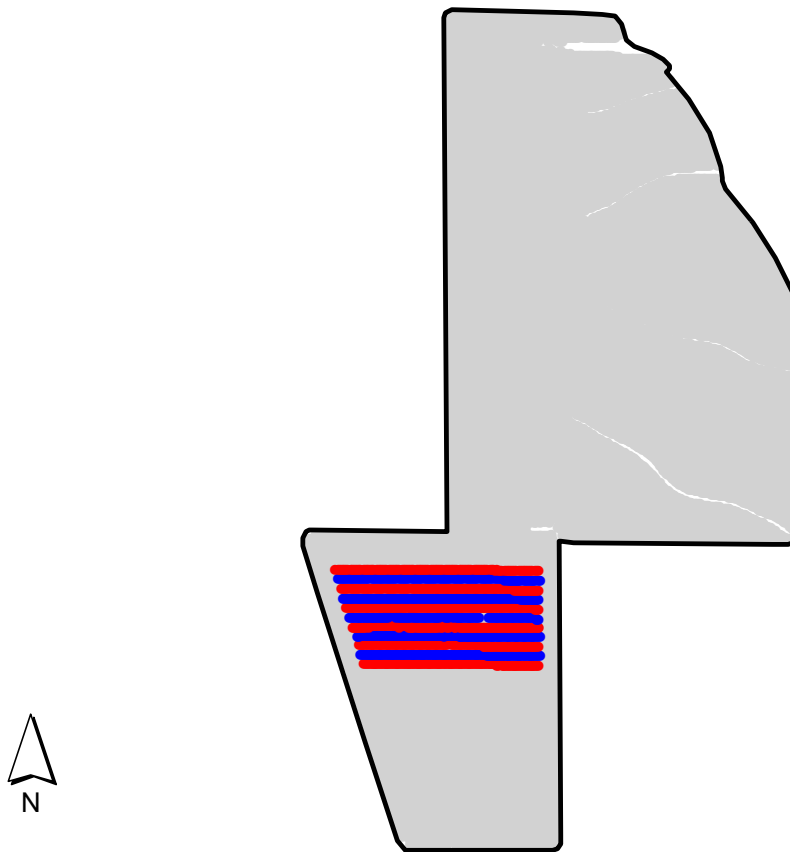
ST2008281A

2008 Aerial Imagery With Soil Survey



ST2008281A

Treatment Type and Location of Trial Within Field



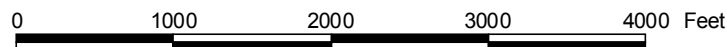
Non-Trial Yield Points (in grey)
Are Not Used In Summary Statistics

Trial Type	Headline Fungicide
Application Method	Ground Applied
Crop Rotation	Soybeans Following Corn
Hybrid/Variety	Prairie Brand 210
Application Date/Crop Stage	8/1/2008 - Not Provided
County	Chickasaw

FUNGICIDE TREATMENT

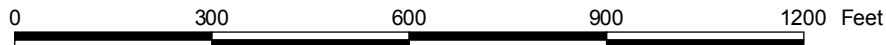
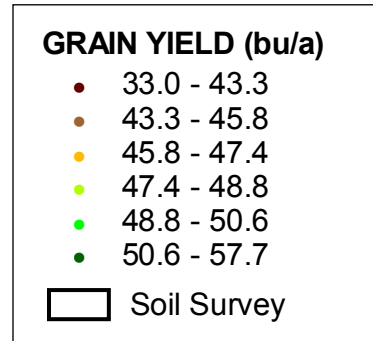
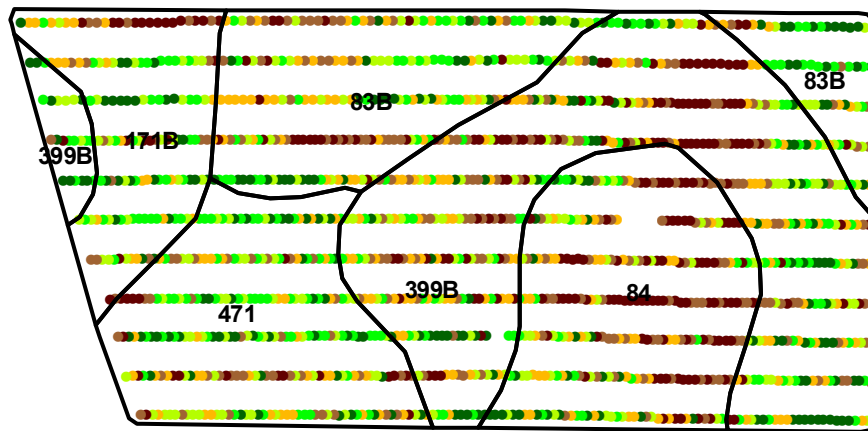
Yield Data Points

- Headline
- Untreated
- Non-Trial



ST2008281A

Trial Grain Yield Map With Soil Survey



ST2008281A

Summary Statistics By Soil Type and By Individual Treatment Strip

Soil Name	Label	Percent of Trial		Yield (bu/a)		Yield Difference
		Headline	Untreated	Headline	Untreated	
Bassett Loam, 2 To 5 Percent Slopes	171B	5.2	4.8	47.1	47.8	-0.7
Readlyn Loam, 2 To 5 Percent Slopes	399B	18.2	17.6	47.8	46.0	1.8
Oran Loam, 0 To 2 Percent Slopes	471	9.2	8.1	48.5	47.6	0.9
Kenyon Loam, 2 To 5 Percent Slopes	83B	11.0	7.4	48.4	46.7	1.7
Clyde Clay Loam, 0 To 3 Percent Slopes	84	10.8	7.8	46.1	44.1	2.0
YIELD AVERAGE FOR TRIAL				47.6	46.3	1.3

