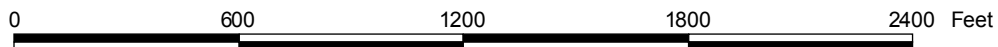
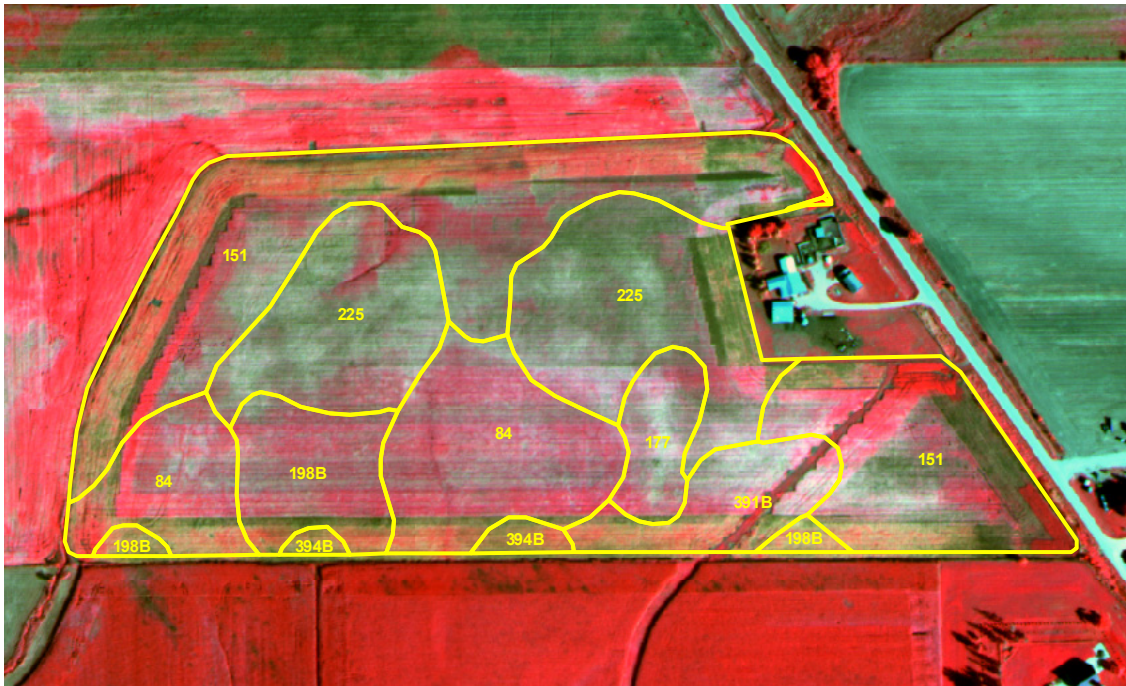


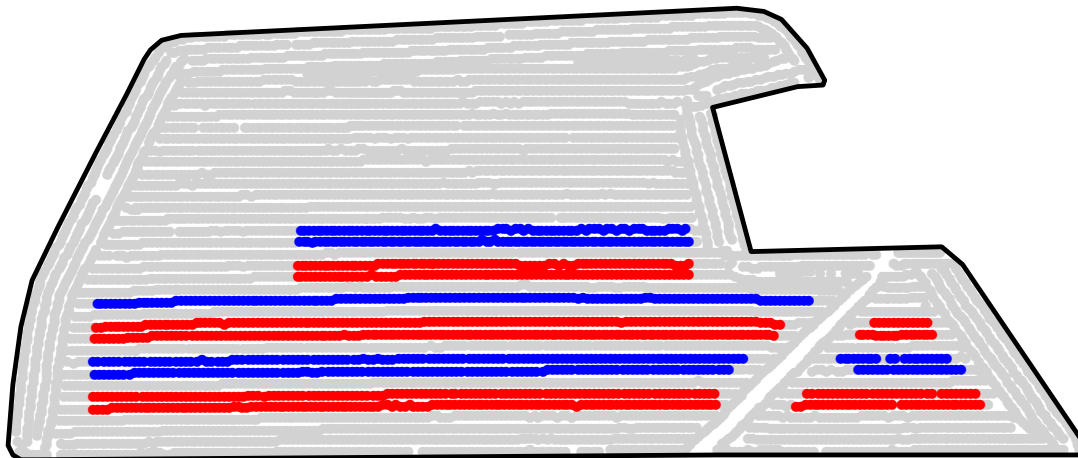
ST2008263A

2008 Aerial Imagery With Soil Survey



ST2008263A

Treatment Type and Location of Trial Within Field

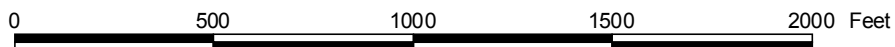


Non-Trial Yield Points (in grey)
Are Not Used In Summary Statistics



Trial Type	Headline Fungicide
Application Method	Ground Applied
Crop Rotation	Soybeans Following Corn
Hybrid/Variety	NK Brand S21-V9
Application Date/Crop Stage	7/30/2008 - R3 Beg. Pod
County	Chickasaw

FUNGICIDE TREATMENT	
Yield Data Points	
●	Headline
●	Untreated
●	Non-Trial



ST2008263A

Summary Statistics By Soil Type and By Individual Treatment Strip

Soil Name	Label	Percent of Trial		Yield (bu/a)		Yield Difference
		Headline	Untreated	Headline	Untreated	
Marshan Clay Loam, 24 To 32 Inches To Sand And Gravel, 0 To 2 Percent Slopes	151	7.5	4.2	44.6	44.7	-0.1
Saude Loam, 0 To 2 Percent Slopes	177	6.6	3.3	46.5	43.8	2.7
Floyd Loam, 1 To 4 Percent Slopes	198B	9.2	5.1	49.4	46.4	3.0
Lawler Loam, 24 To 32 Inches To Sand And Gravel, 0 To 2 Percent Slopes	225	7.8	13.6	44.2	45.0	-0.8
Clyde-Floyd Complex, 1 To 4 Percent Slopes	391B	2.1	1.6	46.6	41.6	5.0
Clyde Clay Loam, 0 To 3 Percent Slopes	84	23.4	15.4	49.6	46.8	2.8
YIELD AVERAGE FOR TRIAL				47.7	45.6	2.1

