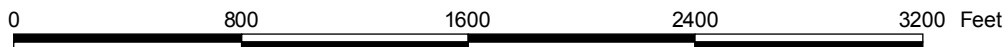
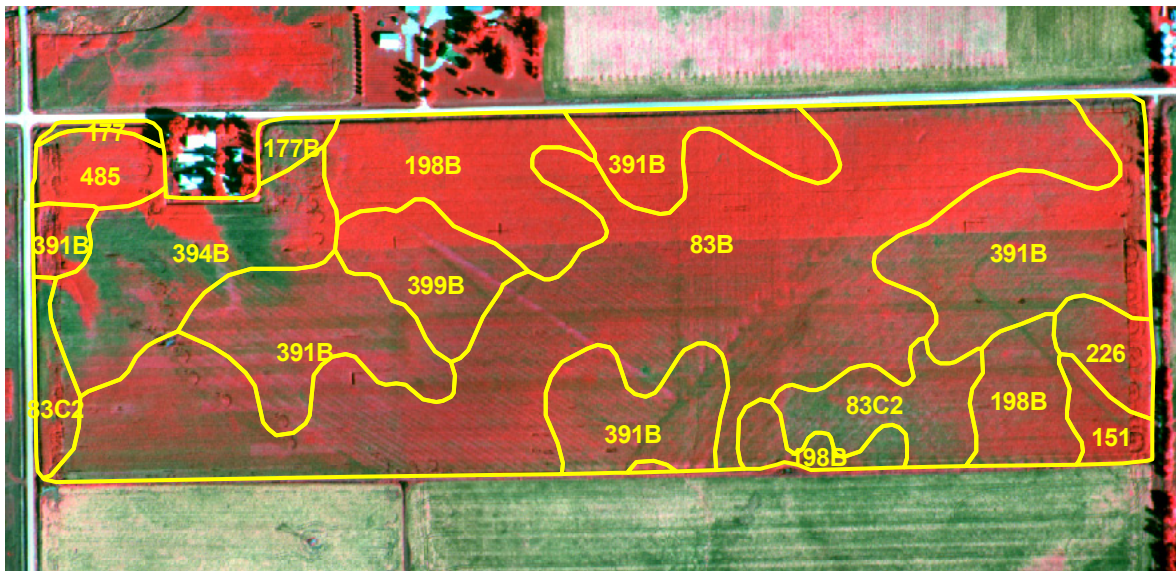


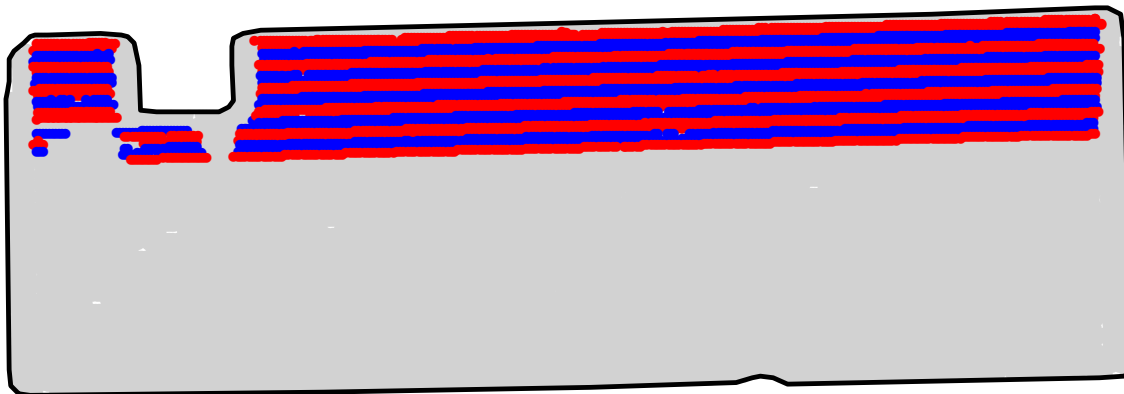
ST2008029C

2008 Aerial Imagery With Soil Survey



ST2008029C

Treatment Type and Location of Trial Within Field



Non-Trial Yield Points (in grey)
Are Not Used In Summary Statistics

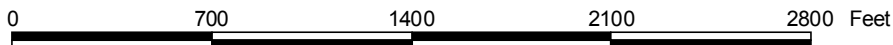


Trial Type	Headline Fungicide
Application Method	In Furrow
Crop Rotation	Corn Following Soybeans
Hybrid/Variety	Pioneer 35A30
Application Date/Crop Stage	5/6/2008 - Planting
County	Chickasaw

FUNGICIDE TREATMENT

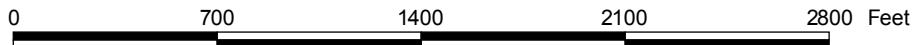
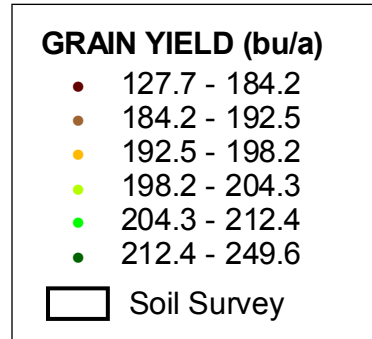
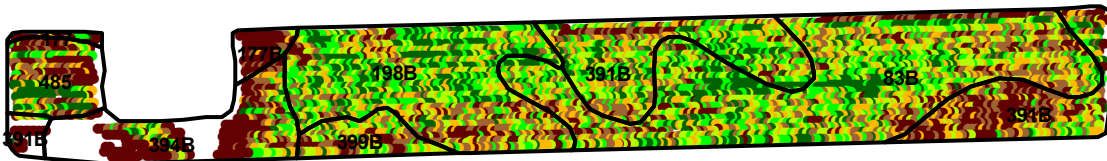
Yield Data Points

- Headline (In Furrow)
- Untreated
- Non-Trial



ST2008029C

Trial Grain Yield Map With Soil Survey



ST2008029C

Summary Statistics By Soil Type and By Individual Treatment Strip

Soil Name	Label	Percent of Trial		Yield (bu/a)		Yield Difference
		Headline	Untreated	Headline	Untreated	
Saude Loam, 0 To 2 Percent Slopes	177	0.2	0.0	187.3	0.0	0.0
Saude Loam, 2 To 5 Percent Slopes	177B	0.8	0.5	167.1	177.0	-9.9
Floyd Loam, 1 To 4 Percent Slopes	198B	11.6	10.8	204.1	200.8	3.3
Clyde-Floyd Complex, 1 To 4 Percent Slopes	391B	11.4	10.2	196.3	196.6	-0.3
Ostrander Loam, 2 To 5 Percent Slopes	394B	3.2	3.3	182.1	181.0	1.1
Readlyn Loam, 2 To 5 Percent Slopes	399B	1.8	1.8	197.3	189.9	7.4
Spillville Loam, 0 To 2 Percent Slopes	485	3.0	2.5	195.0	194.3	0.7
Kenyon Loam, 2 To 5 Percent Slopes	83B	19.9	19.1	201.0	200.7	0.3
YIELD AVERAGE FOR TRIAL				198.4	197.5	0.9

