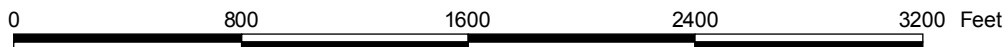
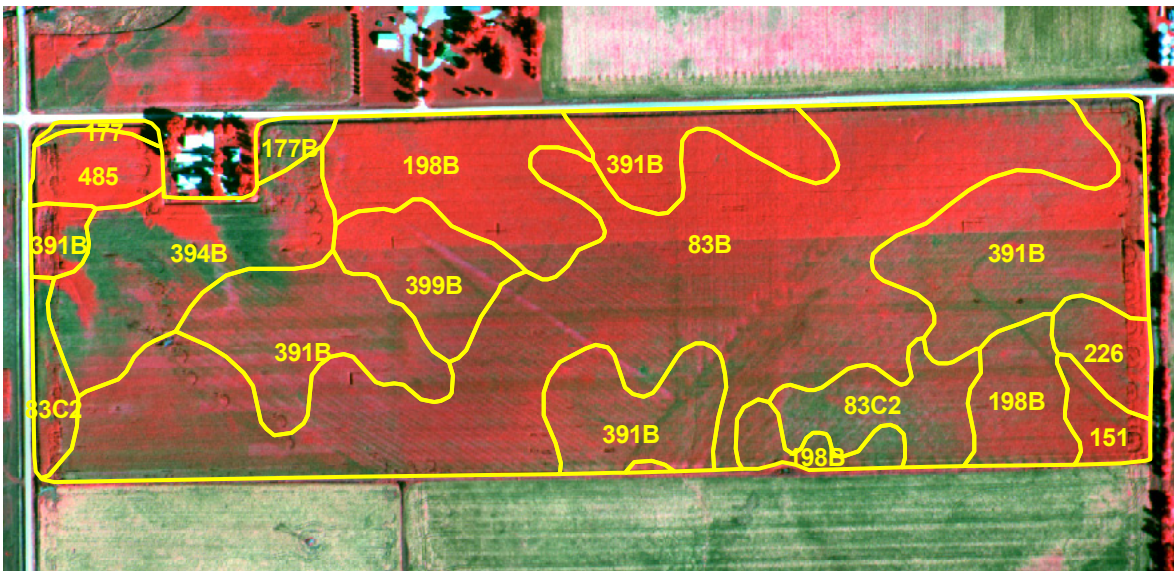


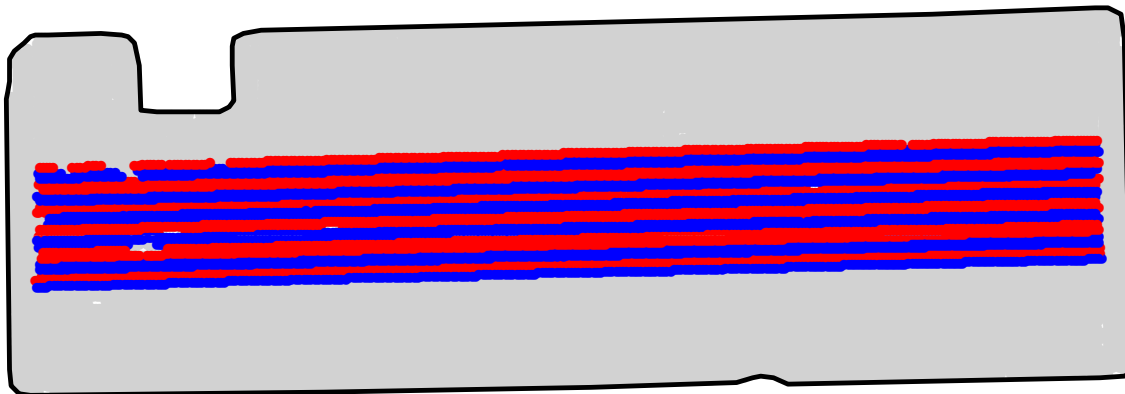
ST2008029B

2008 Aerial Imagery With Soil Survey



ST2008029B

Treatment Type and Location of Trial Within Field

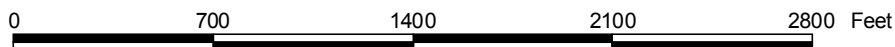


Non-Trial Yield Points (in grey)
Are Not Used In Summary Statistics



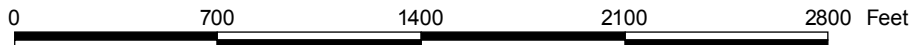
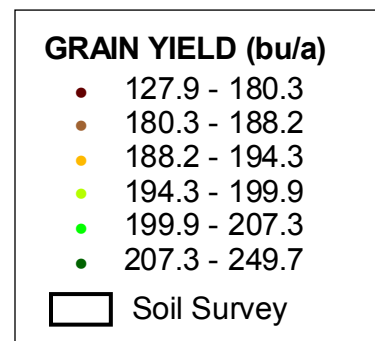
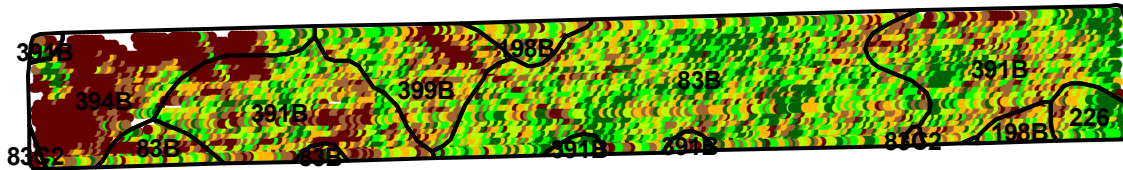
Trial Type	Headline Fungicide
Application Method	In Furrow
Crop Rotation	Corn Following Soybeans
Hybrid/Variety	Dekalb DKC52-47
Application Date/Crop Stage	5/6/2008 - Planting
County	Chickasaw

FUNGICIDE TREATMENT	
Yield Data Points	
●	Headline (In Furrow)
●	Untreated
●	Non-Trial



ST2008029B

Trial Grain Yield Map With Soil Survey



ST2008029B

Summary Statistics By Soil Type and By Individual Treatment Strip

Soil Name	Label	Percent of Trial		Yield (bu/a)		Yield Difference
		Headline	Untreated	Headline	Untreated	
Floyd Loam, 1 To 4 Percent Slopes	198B	1.6	1.6	192.3	192.9	-0.6
Sand And Gravel, 0 To 2 Percent Slopes	226	1.2	1.3	203.7	201.0	2.7
Clyde-Floyd Complex, 1 To 4 Percent Slopes	391B	16.7	16.7	194.3	193.9	0.4
Ostrander Loam, 2 To 5 Percent Slopes	394B	6.1	6.1	170.8	173.8	-3.0
Readlyn Loam, 2 To 5 Percent Slopes	399B	4.5	4.4	193.0	189.8	3.2
Kenyon Loam, 2 To 5 Percent Slopes	83B	19.7	19.7	199.0	197.9	1.1
Kenyon Loam, 5 To 9 Percent Slopes, Moderately Eroded	83C2	0.1	0.1	173.9	181.8	-7.9
YIELD AVERAGE FOR TRIAL				193.3	192.8	0.5

