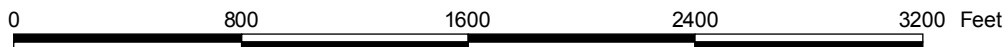
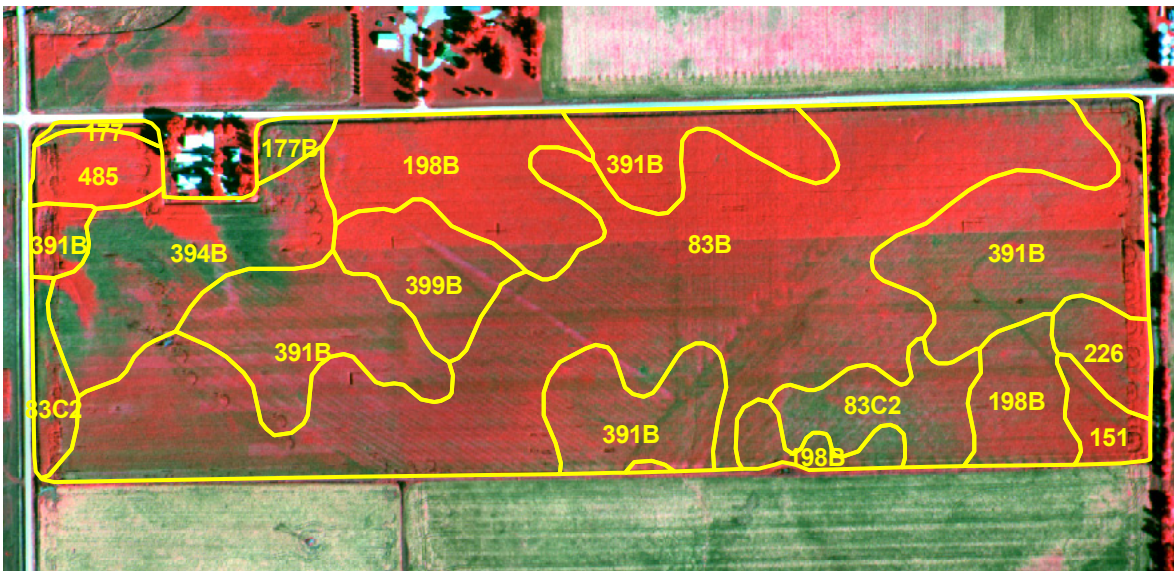


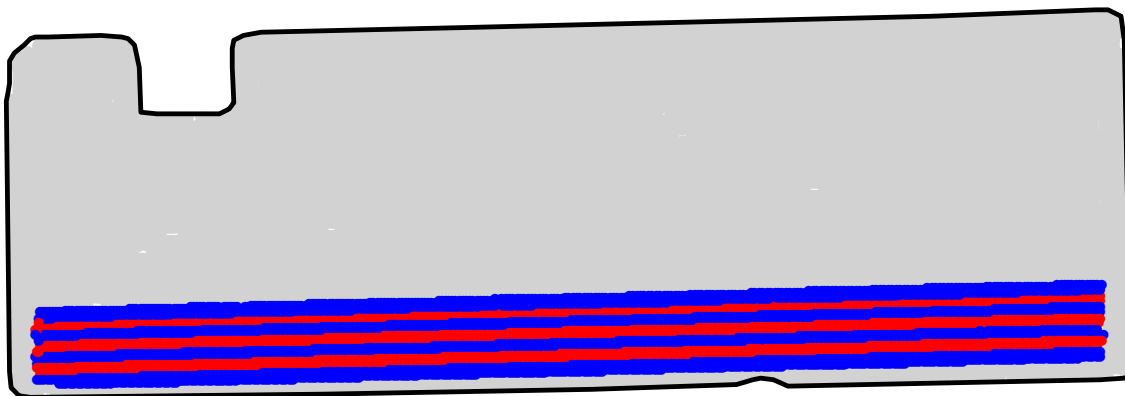
ST2008029A

# 2008 Aerial Imagery With Soil Survey



ST2008029A

# Treatment Type and Location of Trial Within Field



Non-Trial Yield Points (in grey)  
Are Not Used In Summary Statistics

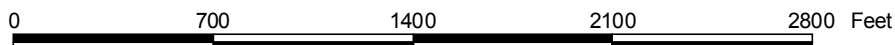


<b>Trial Type</b>	Headline Fungicide
<b>Application Method</b>	In Furrow
<b>Crop Rotation</b>	Corn Following Soybeans
<b>Hybrid/Variety</b>	Dekalb DKC52-40
<b>Application Date/Crop Stage</b>	5/6/2008 - Planting
<b>County</b>	Chickasaw

**FUNGICIDE TREATMENT**

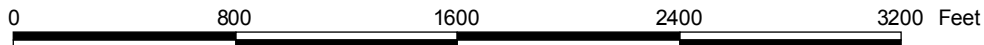
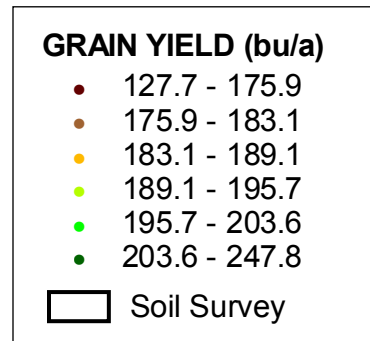
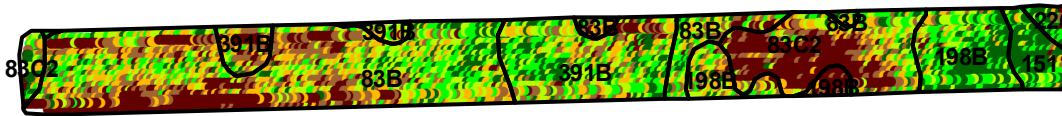
Yield Data Points

- Headline (In Furrow)
- Untreated
- Non-Trial



ST2008029A

# Trial Grain Yield Map With Soil Survey



ST2008029A

## Summary Statistics By Soil Type and By Individual Treatment Strip

Soil Name	Label	Percent of Trial		Yield (bu/a)		Yield Difference
		Headline	Untreated	Headline	Untreated	
Marshan Clay Loam, 24 To 32 Inches To Sand And Gravel, 0 To 2 Percent Slopes	151	1.8	2.2	209.7	207.8	1.9
Floyd Loam, 1 To 4 Percent Slopes	198B	5.5	7.4	196.0	196.8	-0.8
Lawler Loam, 32 To 40 Inches To Sand And Gravel, 0 To 2 Percent Slopes	226	0.4	0.7	202.0	206.5	-4.5
Clyde-Floyd Complex, 1 To 4 Percent Slopes	391B	8.3	10.6	193.6	191.7	1.9
Kenyon Loam, 2 To 5 Percent Slopes	83B	19.8	26.8	189.1	186.5	2.6
Kenyon Loam, 5 To 9 Percent Slopes, Moderately Eroded	83C2	7.6	9.0	180.4	181.9	-1.5
<b>YIELD AVERAGE FOR TRIAL</b>				<b>190.3</b>	<b>189.2</b>	<b>1.1</b>

