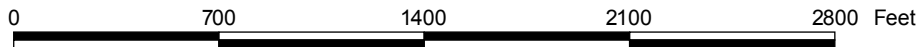


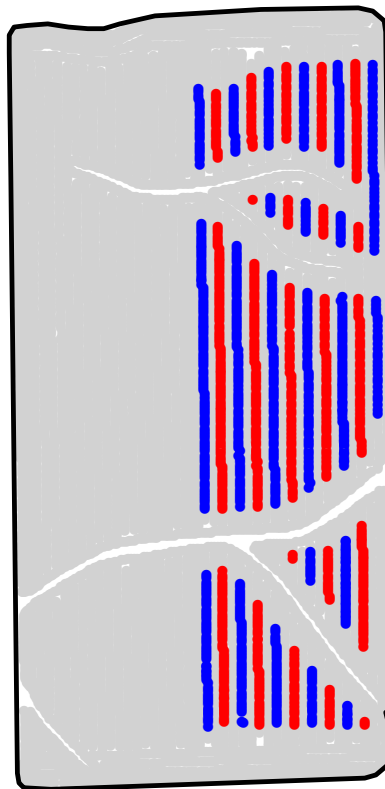
ST2008360A

# 2008 Aerial Imagery With Soil Survey



ST2008360A

# Treatment Type and Location of Trial Within Field



Non-Trial Yield Points (in grey)  
Are Not Used In Summary Statistics

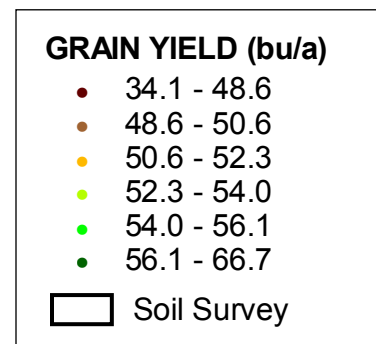
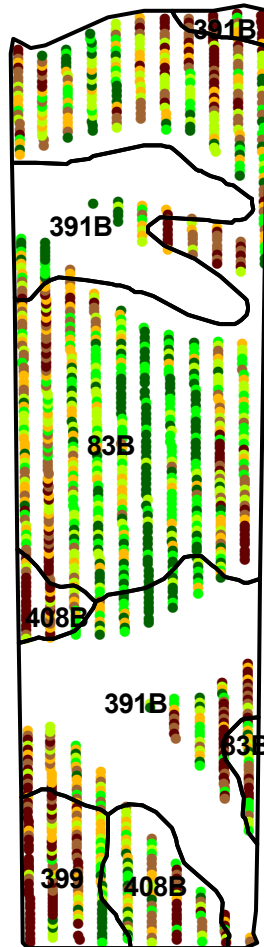
<b>Trial Type</b>	Headline Fungicide
<b>Application Method</b>	Ground Applied
<b>Crop Rotation</b>	Soybeans Following Corn
<b>Hybrid/Variety</b>	NK Brand S24-J1
<b>Application Date/Crop Stage</b>	7/24/2008 - R2 Full Bloom
<b>County</b>	Buchanan

<b>FUNGICIDE TREATMENT</b>	
Yield Data Points	
●	Headline
●	Untreated
●	Non-Trial



ST2008360A

# Trial Grain Yield Map With Soil Survey



ST2008360A

# Summary Statistics By Soil Type and By Individual Treatment Strip

Soil Name	Label	Percent of Trial		Yield (bu/a)		Yield Difference
		Headline	Untreated	Headline	Untreated	
Clyde-Floyd Complex, 1 To 4 Percent Slopes	391B	8.0	9.6	53.2	51.2	2.0
Readlyn Loam, 1 To 3 Percent Slopes	399	4.3	4.6	51.4	46.6	4.8
Olin Fine Sandy Loam, 2 To 5 Percent Slopes	408B	3.7	5.7	51.6	50.7	0.9
Kenyon Loam, 2 To 5 Percent Slopes	83B	30.7	33.5	53.1	52.7	0.4
<b>YIELD AVERAGE FOR TRIAL</b>				<b>52.9</b>	<b>51.7</b>	<b>1.2</b>

