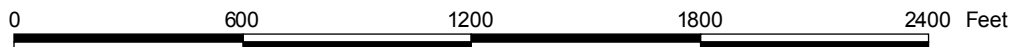


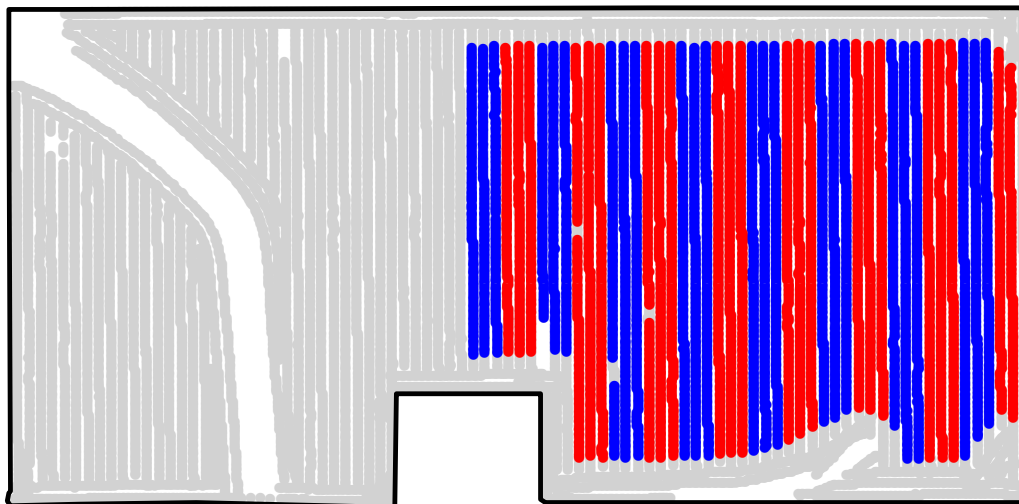
ST2008259A

2008 Aerial Imagery With Soil Survey



ST2008259A

Treatment Type and Location of Trial Within Field

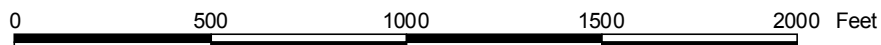


Non-Trial Yield Points (in grey)
Are Not Used In Summary Statistics



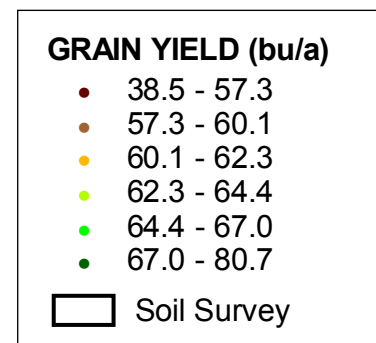
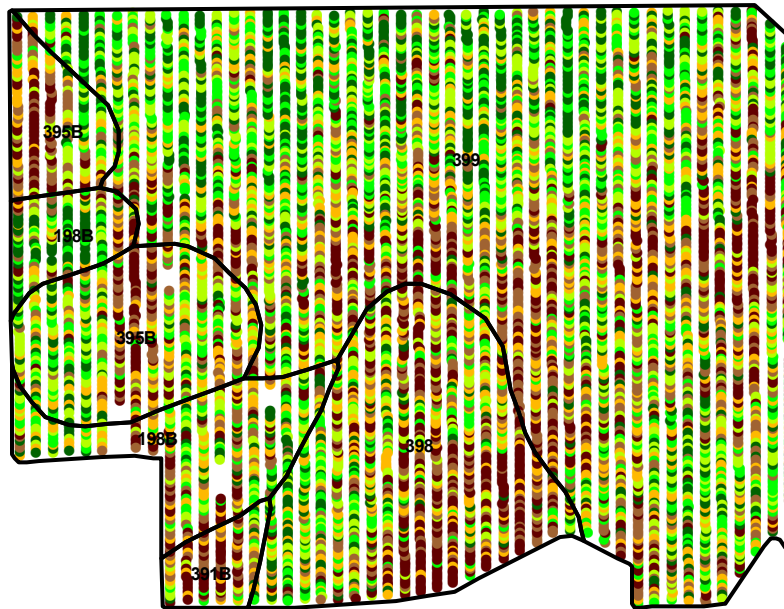
Trial Type	Headline Fungicide
Application Method	Ground Applied
Crop Rotation	Soybeans Following Corn
Hybrid/Variety	Pioneer 93M11
Application Date/Crop Stage	8/11/2008 - R3 Beg. Pod
County	Black Hawk

FUNGICIDE TREATMENT	
Yield Data Points	
●	Headline
●	Untreated
●	Non-Trial



ST2008259A

Trial Grain Yield Map With Soil Survey



ST2008259A

Summary Statistics By Soil Type and By Individual Treatment Strip

Soil Name	Label	Percent of Trial		Yield (bu/a)		Yield Difference
		Headline	Untreated	Headline	Untreated	
Floyd Loam, 1 To 4 Percent Slopes	198B	3.9	3.9	63.7	62.4	1.3
Clyde-Floyd Complex, 1 To 4 Percent Slopes	391B	0.7	1.0	58.8	58.8	0.0
Marquis Loam, 2 To 5 Percent Slopes	395B	4.3	5.8	63.2	60.0	3.2
Tripoli Clay Loam, 0 To 2 Percent Slopes	398	8.7	7.8	61.2	59.5	1.7
Readlyn Loam, 1 To 3 Percent Slopes	399	32.2	31.7	64.0	61.5	2.5
YIELD AVERAGE FOR TRIAL				63.4	61.1	2.3

