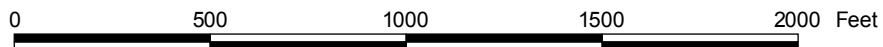
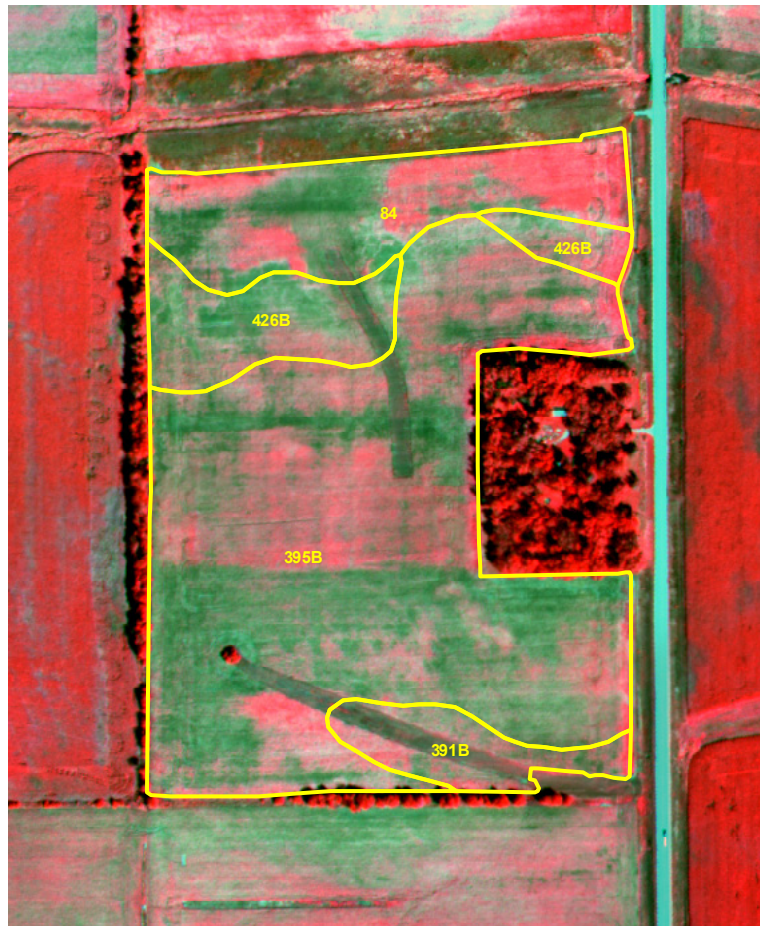


ST2008247A

2008 Aerial Imagery With Soil Survey



ST2008247A

Treatment Type and Location of Trial Within Field



Non-Trial Yield Points (in grey)
Are Not Used In Summary Statistics

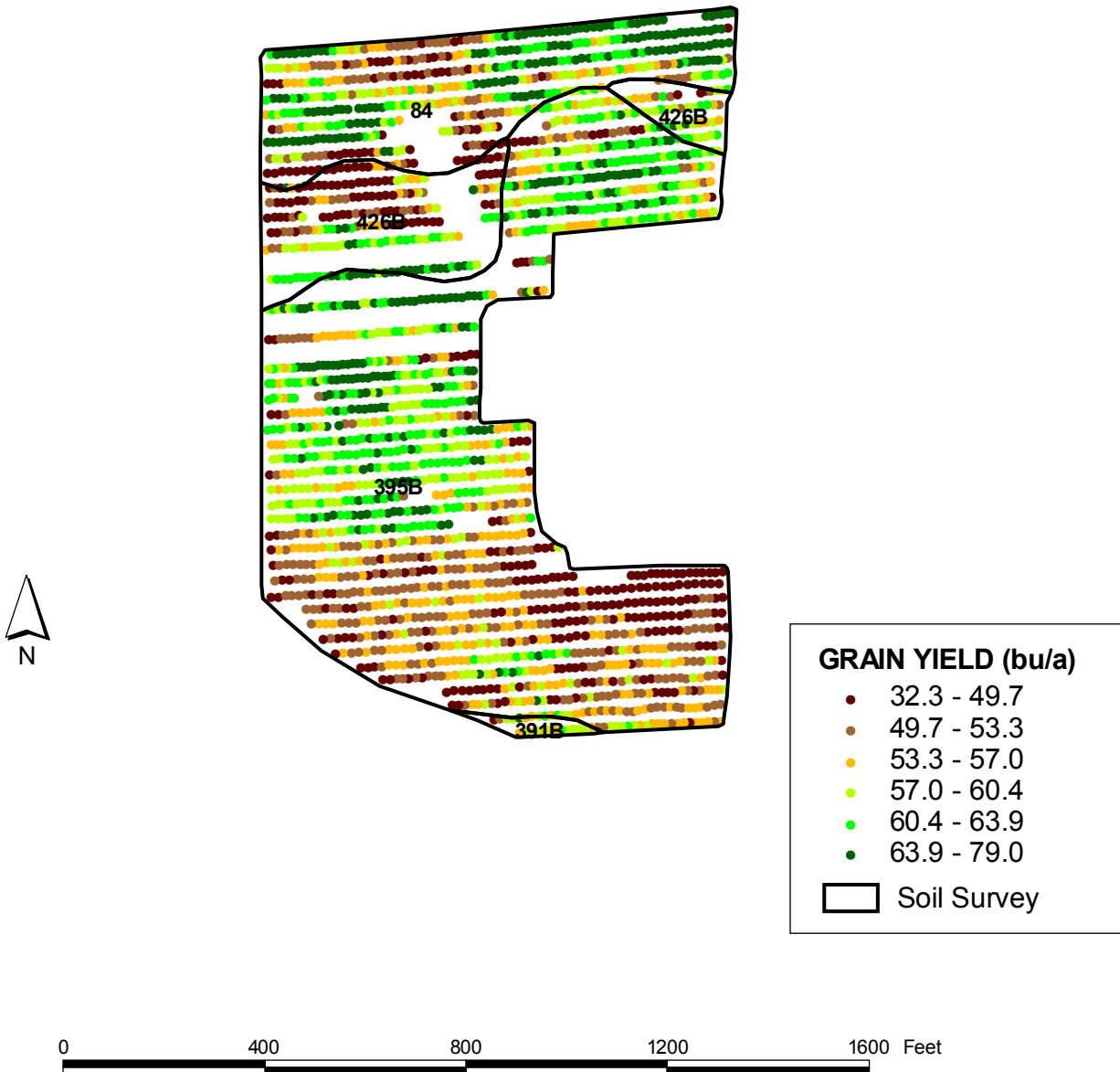
Trial Type	Headline Fungicide
Application Method	Ground Applied
Crop Rotation	Soybeans Following Corn
Hybrid/Variety	Pioneer 92M40
Application Date/Crop Stage	8/2/2008 - R3 Beg. Pod
County	Black Hawk

FUNGICIDE TREATMENT	
Yield Data Points	
●	Headline
●	Untreated
●	Non-Trial



ST2008247A

Trial Grain Yield Map With Soil Survey



ST2008247A

Summary Statistics By Soil Type and By Individual Treatment Strip

Soil Name	Label	Percent of Trial		Yield (bu/a)		Yield Difference
		Headline	Untreated	Headline	Untreated	
Clyde-Floyd Complex, 1 To 4 Percent Slopes	391B	0.0	0.9	0.0	57.5	-57.5
Marquis Loam, 2 To 5 Percent Slopes	395B	31.4	35.2	55.7	57.0	-1.3
Aredale Loam, 2 To 5 Percent Slopes	426B	5.4	5.3	53.9	53.4	0.5
Clyde Silty Clay Loam, 0 To 3 Percent Slopes	84	11.9	9.8	59.0	59.6	-0.6
YIELD AVERAGE FOR TRIAL				56.3	57.1	-0.8

