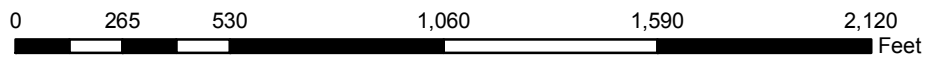
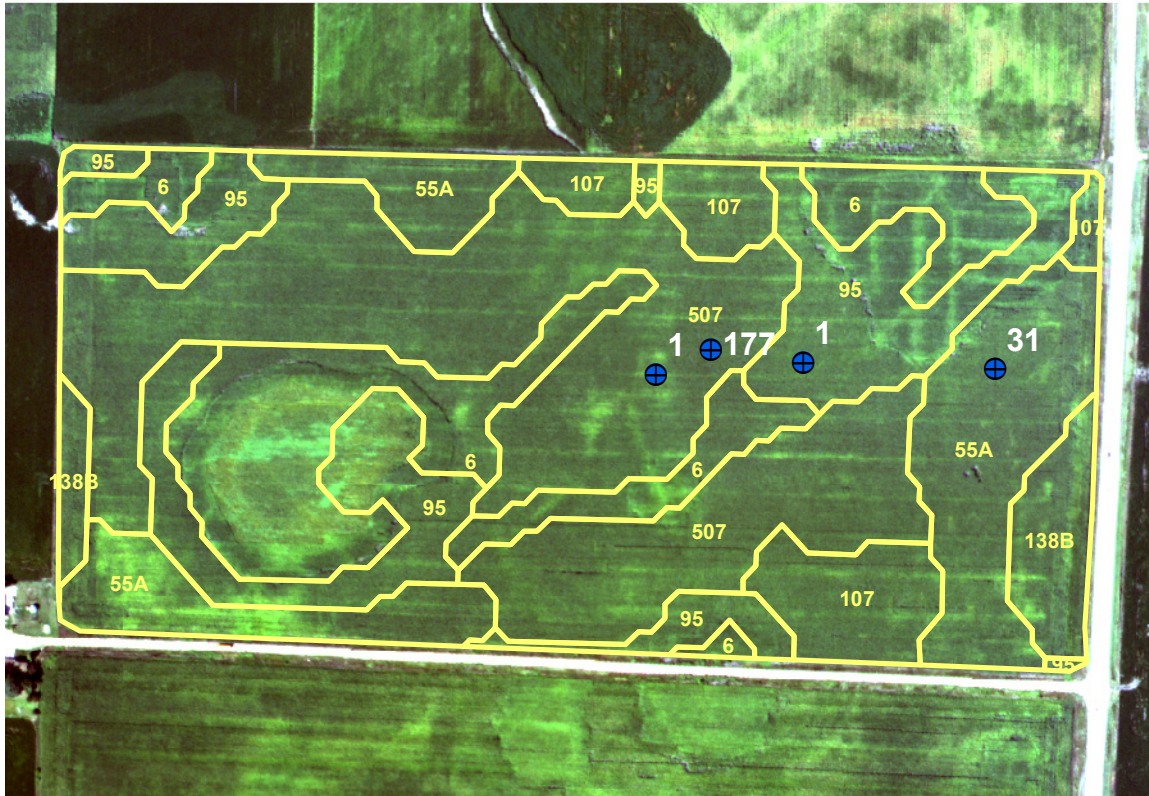


GSS2008\_758

# 2008 Stalk Nitrate Results



Stalk Nitrate Levels (By Category)	
●	Low (< 250 ppm)
⊕	Marginal (250 - 700 ppm)
●	Optimum (700 - 2,000 ppm)
●	High (> 2,000 ppm)
■	Soil Survey

Total N (lbs N/a)	165
N Form	NH3
N Timing	Fall
Previous Crop	Corn
County	Webster
Tillage	Both Fall and Spring