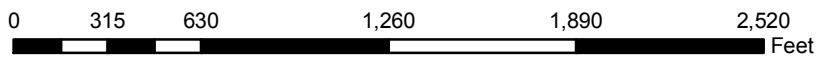
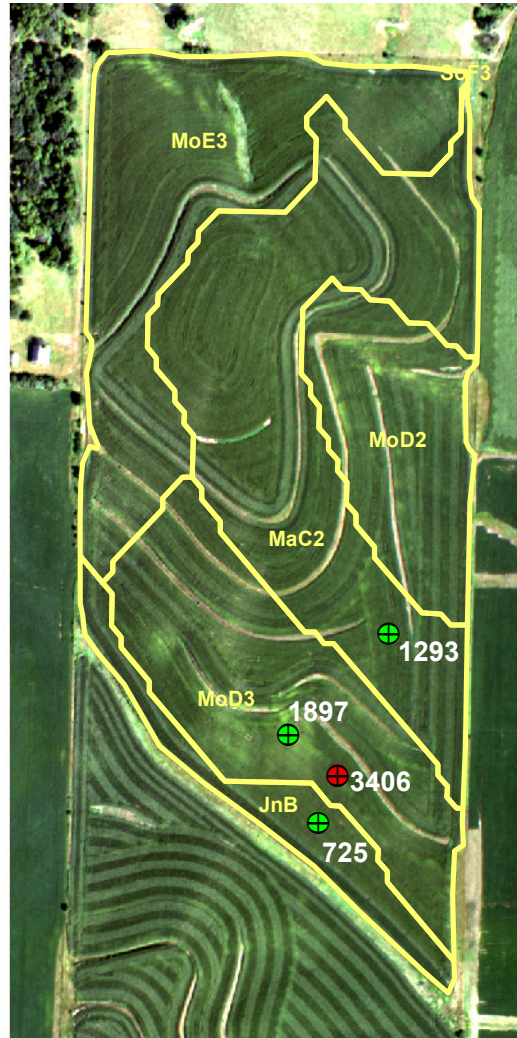


GSS2008_631

2008 Stalk Nitrate Results



| Stalk Nitrate Levels (By Category) | |
|------------------------------------|---------------------------|
| ● | Low (< 250 ppm) |
| ⊕ | Marginal (250 - 700 ppm) |
| ⊗ | Optimum (700 - 2,000 ppm) |
| ● | High (> 2,000 ppm) |
| 1888 | Soil Survey |

| | |
|-------------------|----------|
| Total N (lbs N/a) | 145 |
| N Form | NH3 |
| N Timing | Spring |
| Previous Crop | Soybeans |
| County | Shelby |
| Tillage | No Till |