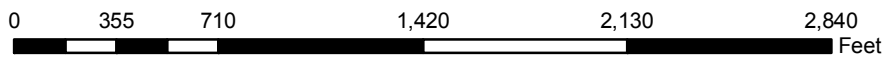
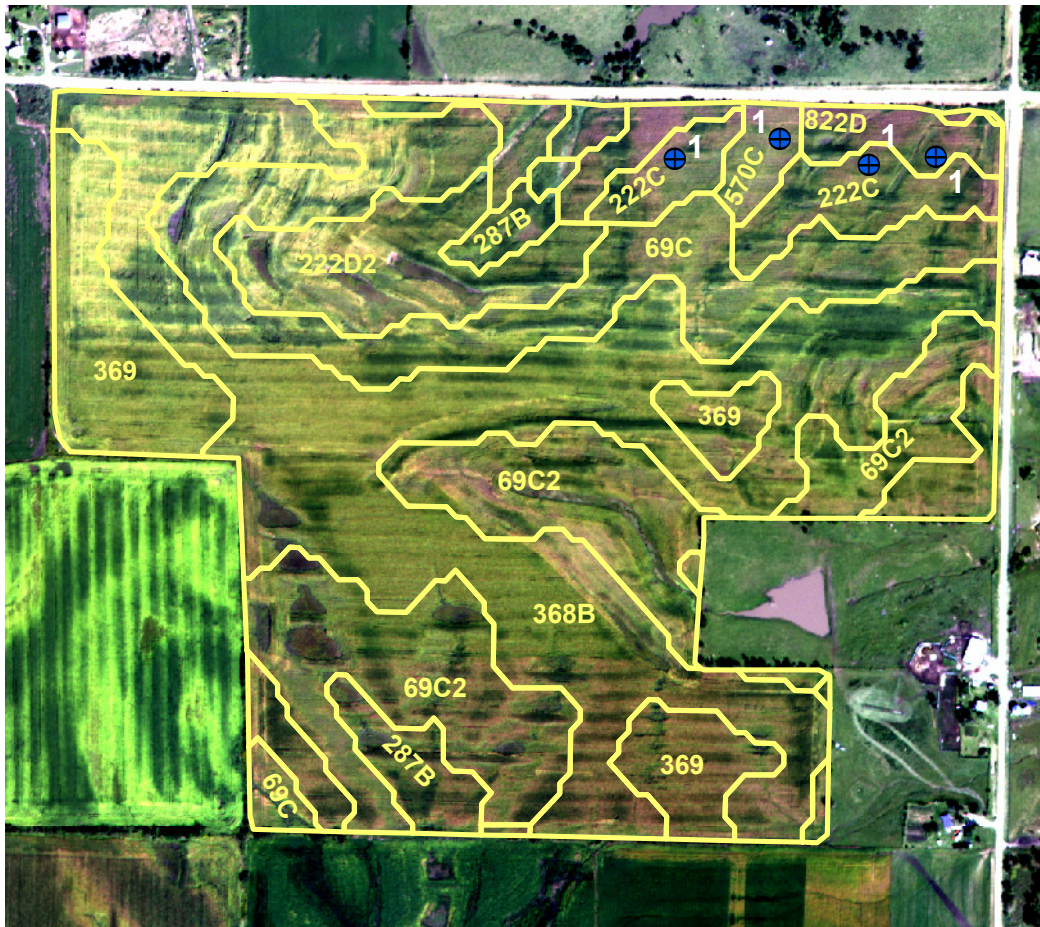


GSS2008_788

2008 Stalk Nitrate Results



Stalk Nitrate Levels (By Category)	
●	Low (< 250 ppm)
⊕	Marginal (250 - 700 ppm)
●	Optimum (700 - 2,000 ppm)
●	High (> 2,000 ppm)
■	Soil Survey

Total N (lbs N/a)	144
N Form	Ammonia Nitrate
N Timing	Sidedress
Previous Crop	Soybeans
County	Ringgold
Tillage	No Till