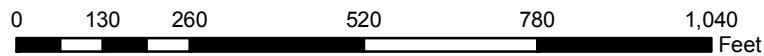
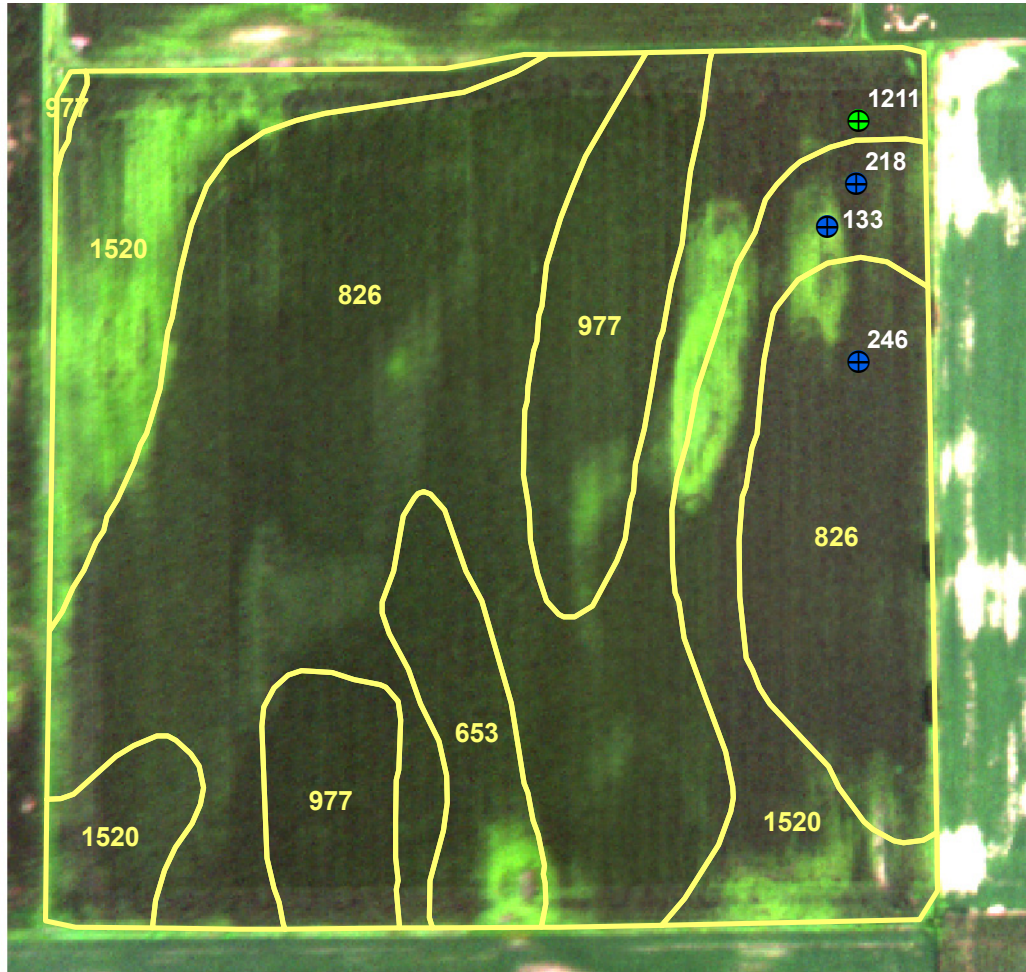


GSS2008_025

2008 Stalk Nitrate Results



Stalk Nitrate Levels (By Category)	
●	Low (< 250 ppm)
⊕	Marginal (250 - 700 ppm)
⊕	Optimum (700 - 2,000 ppm)
●	High (> 2,000 ppm)
1988	Soil Survey

Total N (lbs N/a)	172
N Form	UAN
N Timing	Sidedress
Previous Crop	Corn
County	Muscatine
Tillage	Both Fall and Spring