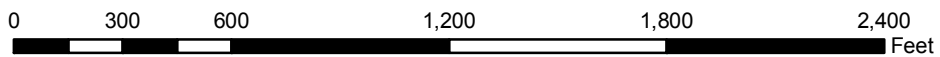
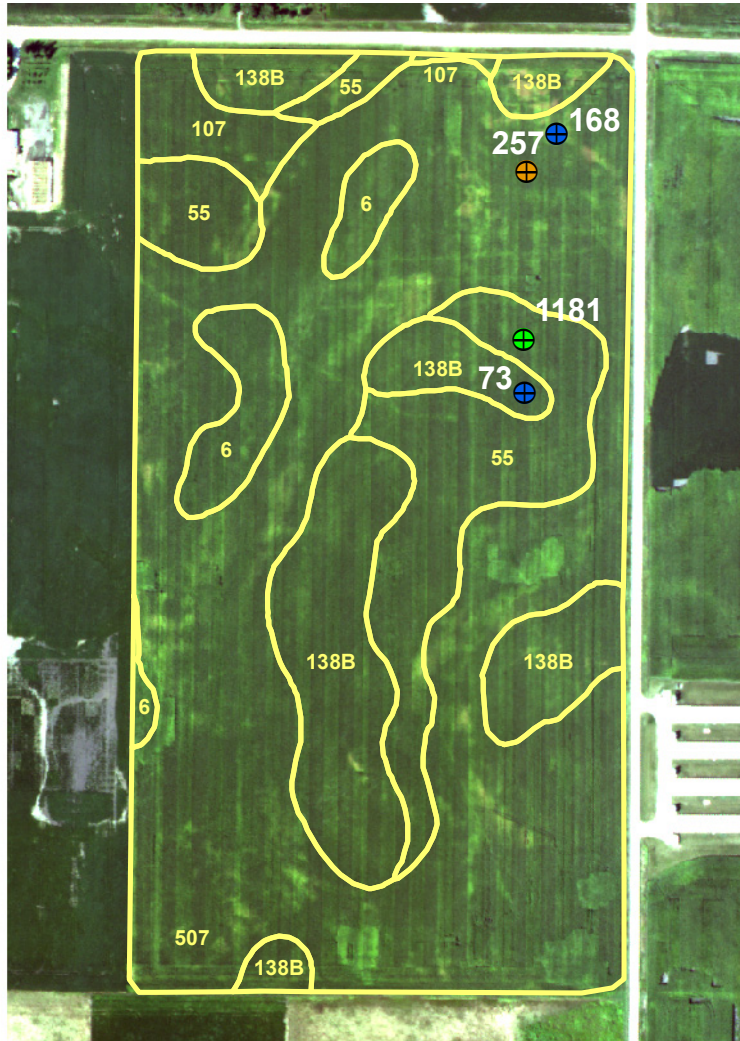


GSS2008_761

2008 Stalk Nitrate Results



Stalk Nitrate Levels (By Category)	
●	Low (< 250 ppm)
⊕	Marginal (250 - 700 ppm)
●	Optimum (700 - 2,000 ppm)
●	High (> 2,000 ppm)
138B	Soil Survey

Total N (lbs N/a)	120
N Form	NH3
N Timing	Fall
Previous Crop	Soybeans
County	Humboldt
Tillage	Spring Only