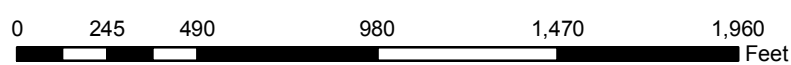
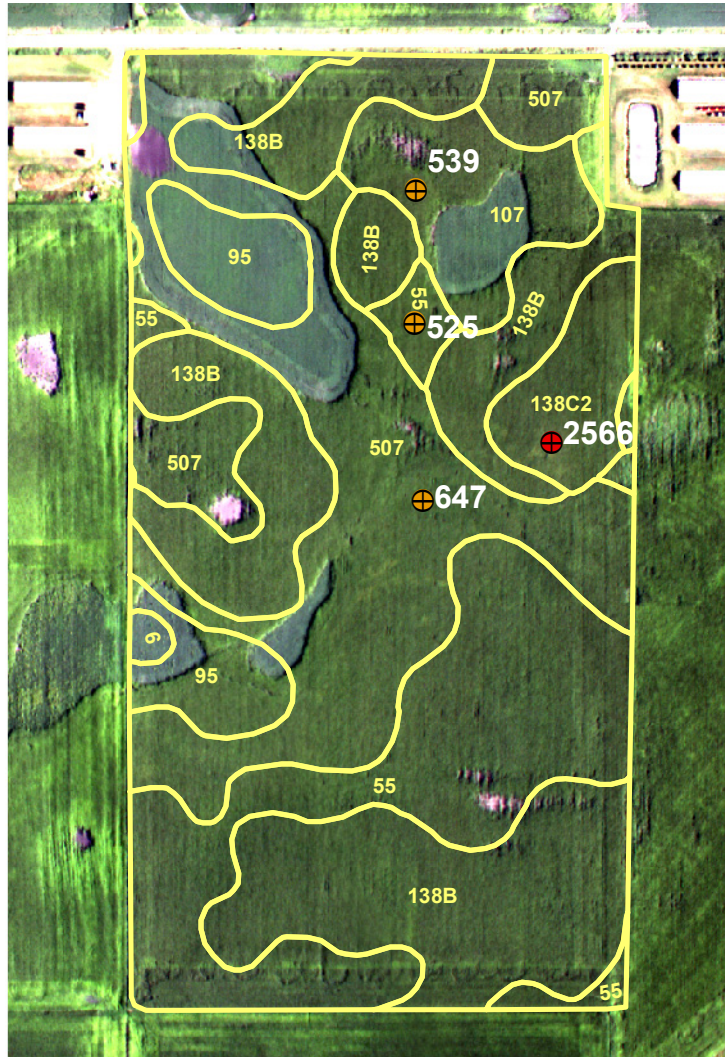


GSS2008_699

2008 Stalk Nitrate Results



| Stalk Nitrate Levels (By Category) | |
|------------------------------------|---------------------------|
| ● | Low (< 250 ppm) |
| ⊕ | Marginal (250 - 700 ppm) |
| ● | Optimum (700 - 2,000 ppm) |
| ● | High (> 2,000 ppm) |
| 138B | Soil Survey |

| | |
|-------------------|----------------------|
| Total N (lbs N/a) | 170 |
| N Form | UAN |
| N Timing | Spring |
| Previous Crop | Corn |
| County | Hamilton |
| Tillage | Both Fall and Spring |