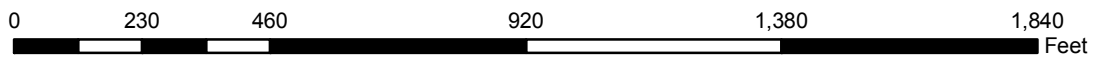
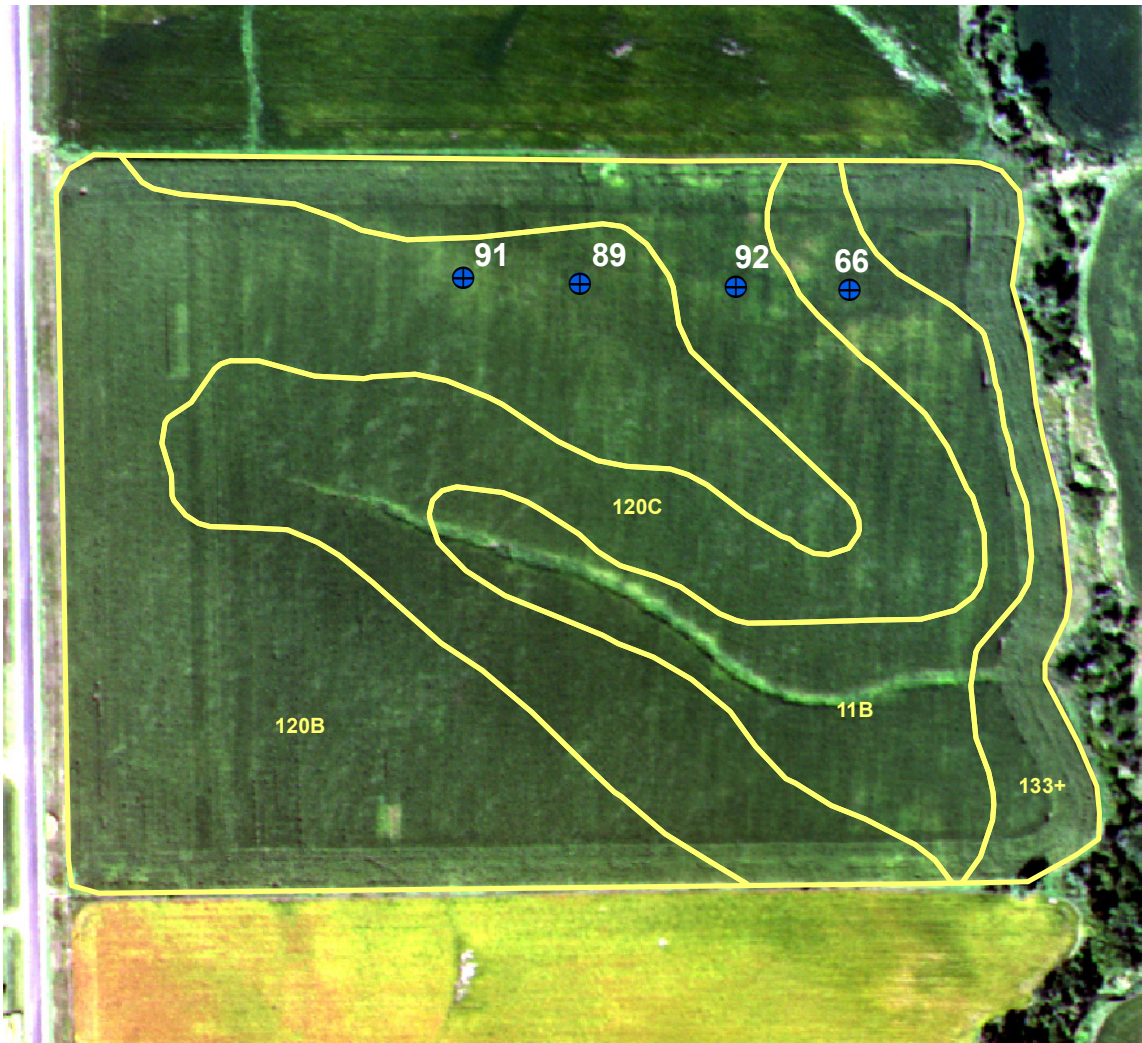


GSS2008_780

2008 Stalk Nitrate Results



Stalk Nitrate Levels (By Category)	
●	Low (< 250 ppm)
⊕	Marginal (250 - 700 ppm)
●	Optimum (700 - 2,000 ppm)
●	High (> 2,000 ppm)
1389	Soil Survey

Total N (lbs N/a)	140
N Form	NH3
N Timing	Spring
Previous Crop	Soybeans
County	Clinton
Tillage	No Till